

FLETCHERS

ESTATE AGENTS



Cromwell Grove, W6

£375,000

A well presented, top floor conversion flat within an attractive Victorian house in Brook Green. The flat comprises of an open plan kitchen/living area complete with fitted appliances and benefiting from plenty of natural light, a double bedroom complete with built in storage and a modern bathroom all in good condition.

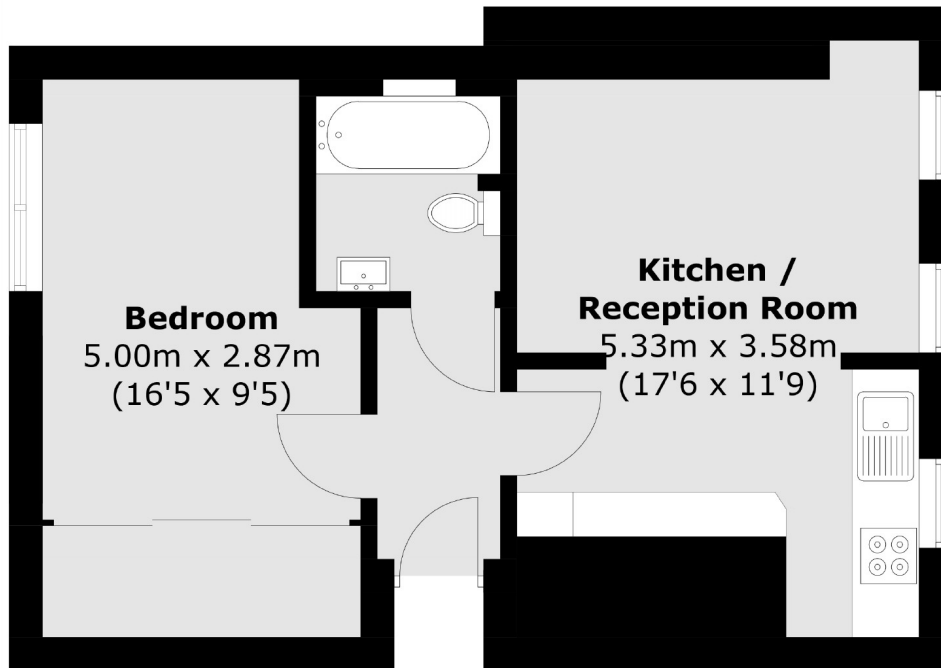
An excellent option for first time buyers & investors alike, the property has lofty views over the surrounding area & a homely feel offering excellent value for money in the heart of Brook Green. The flat is offered to the market with a share of freehold.

Cromwell Grove is a popular tree lined street located in the heart of Brook Green which is known for its excellent independent restaurants and boutiques and within easy reach of the world-renowned amenities of Westfield London, Holland Park and Kensington High Street. The flat is also under a mile from Shepherd's Bush station (Central and Overground Lines) and Goldhawk Road station (Hammersmith and City Lines) offering easy access in and out of the city.

• Top Floor Flat • Open Plan Kitchen Reception • Quiet Tree Lined Street • Share Of Freehold • Heart Of Brook Green • Built In Storage •

FLETCHERS

ESTATE AGENTS



Total area (approx.): 39.6 sq. m (426.2 sq. ft)

Fletchers Brook Green Sales
144 Shepherds Bush Road, Hammersmith, London, W6 7PB
020 7603 1415
brookgreensales@fletcherestates.com

Energy Rating: E. We aim to make our particulars both accurate and reliable. However they are not guaranteed; nor do they form part of an offer or contract. If you require clarification on any points then please contact us, especially if you're traveling some distance to view. Please note that appliances and heating systems have not been tested and therefore no warranties can be given as to their good working order.