

# FLETCHERS

ESTATE AGENTS



## Girdlers Road, W14

£745,000

A bright and spacious, two bedroom garden flat moments from Brook Green in a stunning converted Victorian house. This excellent flat comprises to the front a spacious double bedroom complete with built in storage and a second bedroom currently laid out as an office, a modernised family bathroom, a spacious semi open plan kitchen reception room with a feature exposed brick wall and attractive metal framed sliding glass doors that open into a large, private walled garden to the rear. The flat has attractive wooden floor throughout the living space and metro style tiling in the kitchen and Venetian shutters on the windows in keeping with modern tastes.

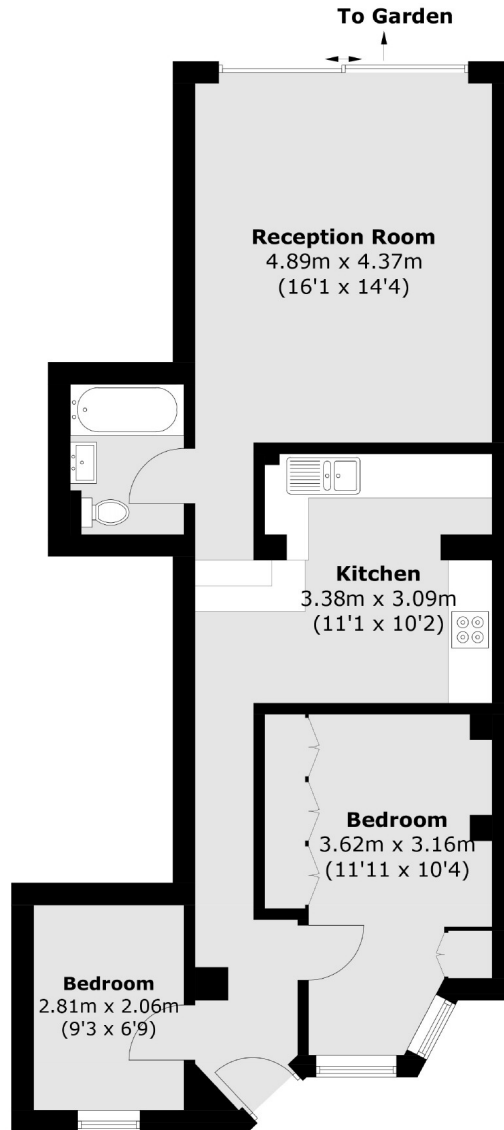
The property is offered to the market in excellent condition throughout, with no onward chain and a share of the freehold.

Girdlers Road is an attractive, tree lined street just off of the popular Brook Green. It is only a street away from Blythe Road which is known locally for it's excellent independent restaurants and eclectic boutiques and is within easy reach of the world renowned amenities of Westfield and Kensington High Street. The property is also nearby the development happening at Kensington Olympia and is sure to benefit from this long term. Girdlers Road is under half a mile from Hammersmith, Barons Court & Kensington Olympia stations offering brilliant access into the city and to heathrow airport (Piccaily, Circle, District, Hammersmith&City and Overground Lines). It is superbly positioned for access to the green space on Brook Green being only one street away.

- Two Bedrooms • Large Private Rear Garden • Share Of Freehold • Attractive Victorian Building • Moments From Brook Green • Open Plan Kitchen/ Reception •

# FLETCHERS

ESTATE AGENTS



Total area (approx.): 63.7 sq. m (685.7 sq. ft)

Fletchers Brook Green Sales  
144 Shepherds Bush Road, Hammersmith, London, W6 7PB  
020 7603 1415  
[brookgreensales@fletcherestates.com](mailto:brookgreensales@fletcherestates.com)

Energy Rating: C. We aim to make our particulars both accurate and reliable. However they are not guaranteed; nor do they form part of an offer or contract. If you require clarification on any points then please contact us, especially if you're traveling some distance to view. Please note that appliances and heating systems have not been tested and therefore no warranties can be given as to their good working order.