

# FLETCHERS

ESTATE AGENTS



## Holland Road, W14

£850,000

A lovely first floor flat within an imposing, half stucco, Victorian building on the borders of Holland Park within the Royal Borough of Kensington and Chelsea. Situated in a well maintained building, the property is arranged laterally comprising to the front of the flat a modern, separate, fitted kitchen and a wonderful separate bay fronted reception room with high ceilings and plenty of natural light. To the rear there are a modernised shower room and two generous double bedrooms with the master benefitting from its own ensuite bathroom. The property benefits from attractive original doors and sash windows throughout along with a lovely Victorian fireplace maintaining the charm of the period.

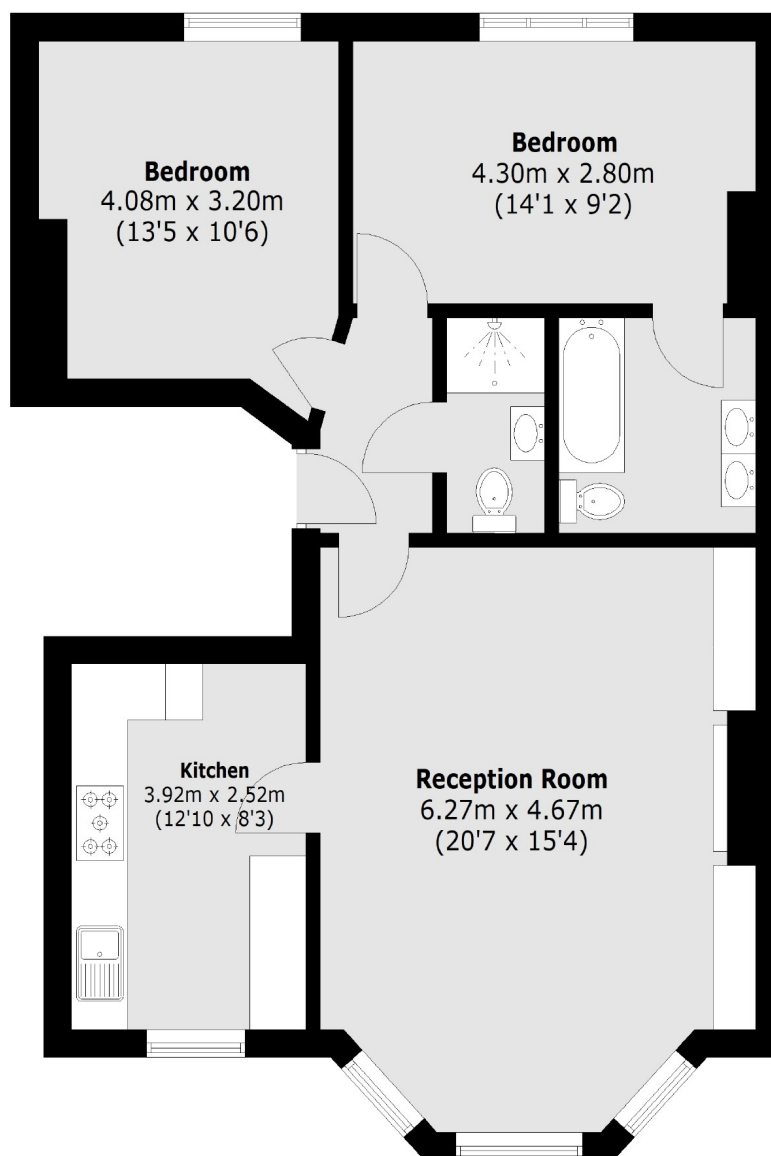
The property has been well kept by the owner and offers a great opportunity for buyers to purchase a property ready to move into in a very attractive street in Kensington and Chelsea. Offered to the market with a share of the freehold and no onward chain.

Holland Road is a popular road in the Borough of Kensington & Chelsea, with excellent access to local amenities in Holland Park, High Street Kensington and Westfield Shopping Centre. The green spaces of Holland Park & Brook Green are nearby. There are good transport links under a mile away with Holland Park Station (Central line), Kensington Olympia and Shepherds Bush station (Overground & Central line).

• Two Double Bedrooms • Separate Reception/Kitchen • Share of Freehold • Excellent Condition Throughout • Period Features Maintained • Moments from Ken High Street •

# FLETCHERS

ESTATE AGENTS



Total area (approx.): 73.6 sq. m (792.2 Sq. ft)

Fletchers Chiswick Turnham Green Sales  
58 Turnham Green Terrace, London, W4 1QP  
020 8987 3000  
[chiswicksales@fletcherestates.com](mailto:chiswicksales@fletcherestates.com)

Energy Rating: C. We aim to make our particulars both accurate and reliable. However they are not guaranteed; nor do they form part of an offer or contract. If you require clarification on any points then please contact us, especially if you're traveling some distance to view. Please note that appliances and heating systems have not been tested and therefore no warranties can be given as to their good working order.