

FLETCHERS

ESTATE AGENTS



Hammersmith Grove, W6

£450,000

A beautifully presented and full of natural light one bedroom apartment situated on the top floor of this period conversion. The property comprises entrance hallway with storage cupboard and Velux window, semi open plan reception with laminate flooring throughout and modern kitchen with breakfast bar, gas hob, washing machine and built in appliances, master bedroom with floor to ceiling built in storage and period features and family bathroom with large window and shower over bath.

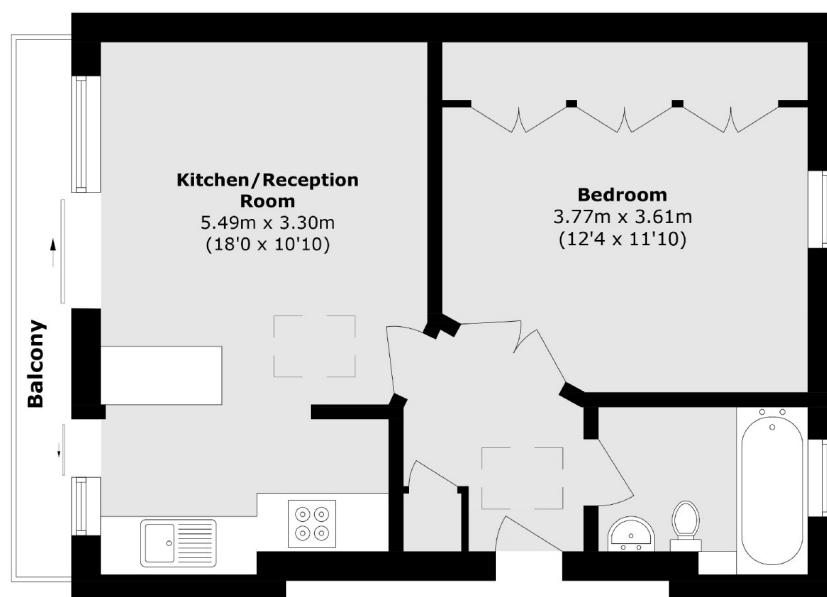
Further benefits include sliding patio doors leading to small private terrace, LED spotlights throughout and an excellent location.

Hammersmith Grove is well located for easy access to Hammersmith Underground station (District, Piccadilly and Hammersmith & City lines) as well as Goldhawk Road Underground station and all of King Streets bars restaurants and amenities. Available in November the property is offered furnished.

- One Double Bedroom • Top Floor Flat • Private Terrace • Open-plan Kitchen/ Reception • Long Lease • Heart of Brackenbury Village •

FLETCHERS

ESTATE AGENTS



Total area (approx.): 38.9 sq. m (418.7 sq. ft)
Balcony are(approx.): 3.1 sq. m (33.3 sq. ft)

Fletchers Brook Green Sales
144 Shepherds Bush Road, Hammersmith, London, W6 7PB
020 7603 1415
brookgreensales@fletcherestates.com

Energy Rating: . We aim to make our particulars both accurate and reliable. However they are not guaranteed; nor do they form part of an offer or contract. If you require clarification on any points then please contact us, especially if you're traveling some distance to view. Please note that appliances and heating systems have not been tested and therefore no warranties can be given as to their good working order.