

FLETCHERS

ESTATE AGENTS



Batoum Gardens, W6

£750,000

A well-presented two bedroom, two bathroom, split-level Victorian converted flat located in an attractive tree-lined street in Brook Green. Arranged over two floors, the first floor comprises of a semi open-plan kitchen/reception with plenty of living space and lots of natural light from two large sash windows, a large double bedroom complete with built-in storage and a family bathroom in excellent decorative order. The second floor, created from a well converted loft space, benefits from a large master bedroom and an en-suite bathroom. There is also plenty of storage in the eaves.

The flat is offered to the market in superb condition throughout and with no onward chain.

Batoum Gardens is located in the heart of Brook Green which is known for its excellent independent restaurants and boutiques and within easy reach of the world-renowned amenities of Westfield London, Holland Park and Kensington High Street. The flat is also under a mile from Shepherd's Bush station (Central and Overground Lines) offering access in and out of the city.

• Split-Level Conversion Flat • Excellent Condition • Two Bathrooms • Two Double Bedrooms • Quiet Tree-Lined Street • Share Of Freehold • £750,000 •

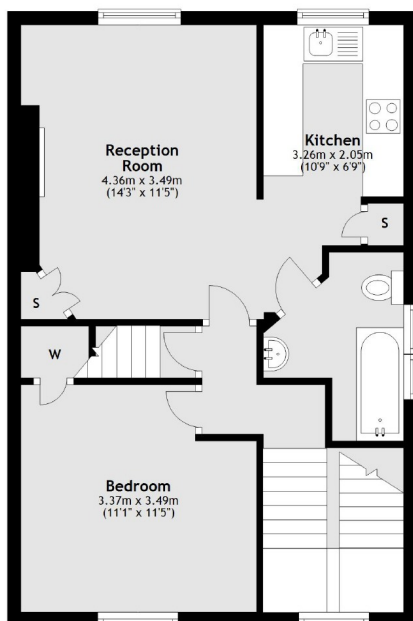
FLETCHERS

ESTATE AGENTS

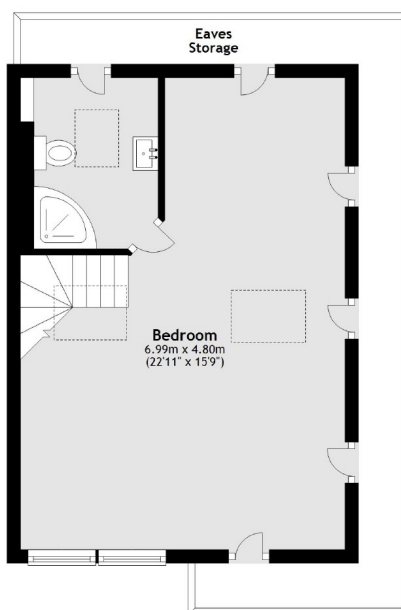
First Floor



Second Floor



Third Floor



Total area: approx. 86.7 sq. metres (932.8 sq. feet)

Fletchers Brook Green Sales
144 Shepherds Bush Road, Hammersmith, London, W6 7PB
020 7603 1415
brookgreensales@fletcherstates.com

Energy Rating: C. We aim to make our particulars both accurate and reliable. However they are not guaranteed; nor do they form part of an offer or contract. If you require clarification on any points then please contact us, especially if you're traveling some distance to view. Please note that appliances and heating systems have not been tested and therefore no warranties can be given as to their good working order.