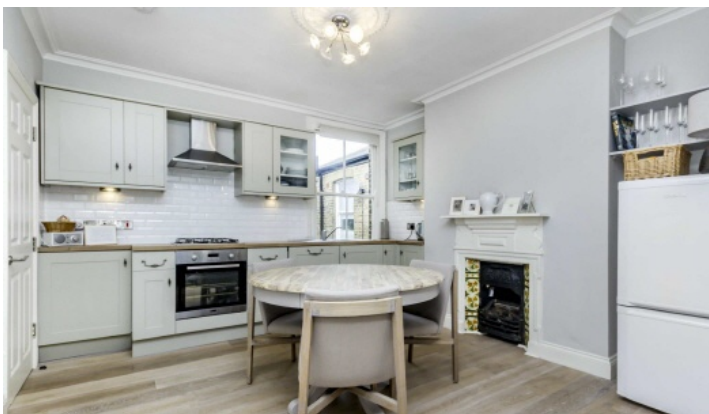


FLETCHERS

ESTATE AGENTS



Sulgrave Road, W6

£400 Per week (£1,733 pcm)

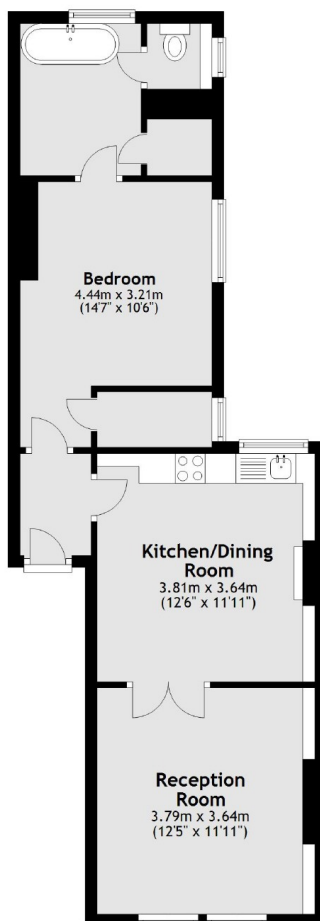
A charming, one bedroom, top floor flat with an interconnecting reception room leading on to a large kitchen with dishwasher and a modern bathroom.

Sulgrave Road is conveniently located between Shepherd's Bush and Hammersmith for easy access to local amenities. The closest station is Goldhawk Road.

- One Bedroom • Top Floor Flat • Large Eat-in Kitchen • Walk In Closet • Unfurnished • Goldhawk Road Tube •

FLETCHERS

ESTATE AGENTS



Total area: approx. 53.3 sq. metres (573.5 sq. feet)

Fletchers Brook Green Lettings
144 Shepherds Bush Road, Hammersmith, London, W6 7PB
020 7603 0603
brookgreenlettings@fletcherestates.com

Energy Rating: E. We aim to make our particulars both accurate and reliable. However they are not guaranteed; nor do they form part of an offer or contract. If you require clarification on any points then please contact us, especially if you're traveling some distance to view. Please note that appliances and heating systems have not been tested and therefore no warranties can be given as to their good working order.