

# FLETCHERS

ESTATE AGENTS



## Holland Road, W14

£720,000

A wonderfully presented second floor flat within an imposing, Victorian villa on the borders of Holland Park within the Royal Borough of Kensington and Chelsea. Situated in a well maintained building, the property is arranged semi-laterally comprising to the front of the flat two double bedrooms and a modern, separate, fitted kitchen. In the middle there is a wonderful separate reception room with period features maintained. To the rear there is a modernised bathroom with separate bath, walk in shower and underfloor heating. The property benefits from excellent ceiling height and attractive original doors and sash windows throughout maintaining the charm of the period.

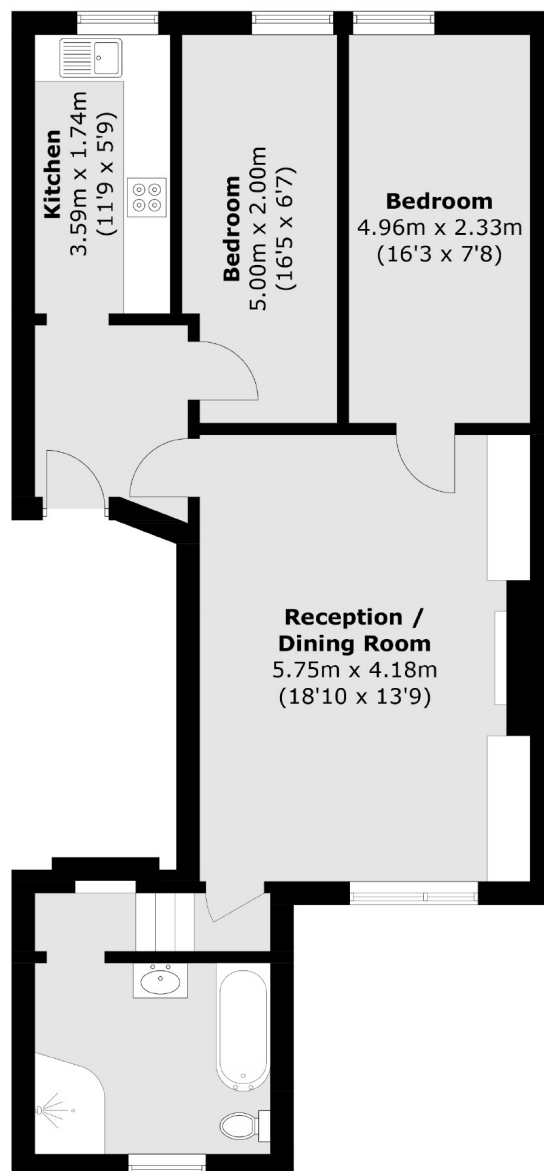
The property has been well kept by the owner and offers a great opportunity for buyers to purchase a property ready to move into in a very attractive street in Kensington and Chelsea. Offered to the market with a share of the freehold.

Holland Road is a popular road in the Borough of Kensington & Chelsea, with excellent access to local amenities in Holland Park, High Street Kensington and Westfield Shopping Centre. The green spaces of Holland Park & Brook Green are nearby. There are good transport links under a mile away with Holland Park Station (Central line), Kensington Olympia and Shepherds Bush station (Overground & Central line).

• Two Double Bedrooms • Separate Reception/Kitchen • Share of Freehold • Excellent Condition Throughout • Period Features Maintained • Moments from Ken High Street •

# FLETCHERS

## ESTATE AGENTS



Total area (approx.): 69.6 sq. m (749.2 sq. ft)

Fletchers Brook Green Sales  
144 Shepherds Bush Road, Hammersmith, London, W6 7PB  
020 7603 1415  
[brookgreensales@fletcherestates.com](mailto:brookgreensales@fletcherestates.com)

Energy Rating: D. We aim to make our particulars both accurate and reliable. However they are not guaranteed; nor do they form part of an offer or contract. If you require clarification on any points then please contact us, especially if you're traveling some distance to view. Please note that appliances and heating systems have not been tested and therefore no warranties can be given as to their good working order.