

FLETCHERS

ESTATE AGENTS



Hamlet Gardens, W6

£950,000

A well appointed and spacious Victorian mansion flat situated within a highly sought after location only a street away from the wonderful Ravenscourt Park.

Situated on the raised ground floor & arranged laterally, this spectacular home retains much of its Victorian character while having been updated superbly to suit modern living blending traditional and modern styles. The property comprises of two double bedrooms both benefitting from floor to ceiling built in wardrobes and excellent ceiling height, a generous bay fronted separate reception room that has been meticulously refurbished with functioning gas fire and custom made shelving/cabinetry, a kitchen that has been completely renovated & designed bespoke for the space complete with high spec fitted appliances and a three piece bathroom suite which again has been updated recently by the current owners.

This excellent home is a great option for first time buyers, downsizers or those looking for a pied a terre and offered to the market with a share of the freehold.



A well appointed and spacious Victorian mansion flat situated within a highly sought after location only a street away from the wonderful Ravenscourt Park.

Situated on the raised ground floor & arranged laterally, this spectacular home retains much of its Victorian character while having been updated superbly to suit modern living blending traditional and modern styles. The property comprises of two double bedrooms both benefitting from floor to ceiling built in wardrobes and excellent ceiling height, a generous bay fronted separate reception room that has been meticulously refurbished with functioning gas fire and custom made shelving/cabinetry, a kitchen that has been completely renovated & designed bespoke for the space complete with high spec fitted appliances and a three piece bathroom suite which again has been updated recently by the current owners.

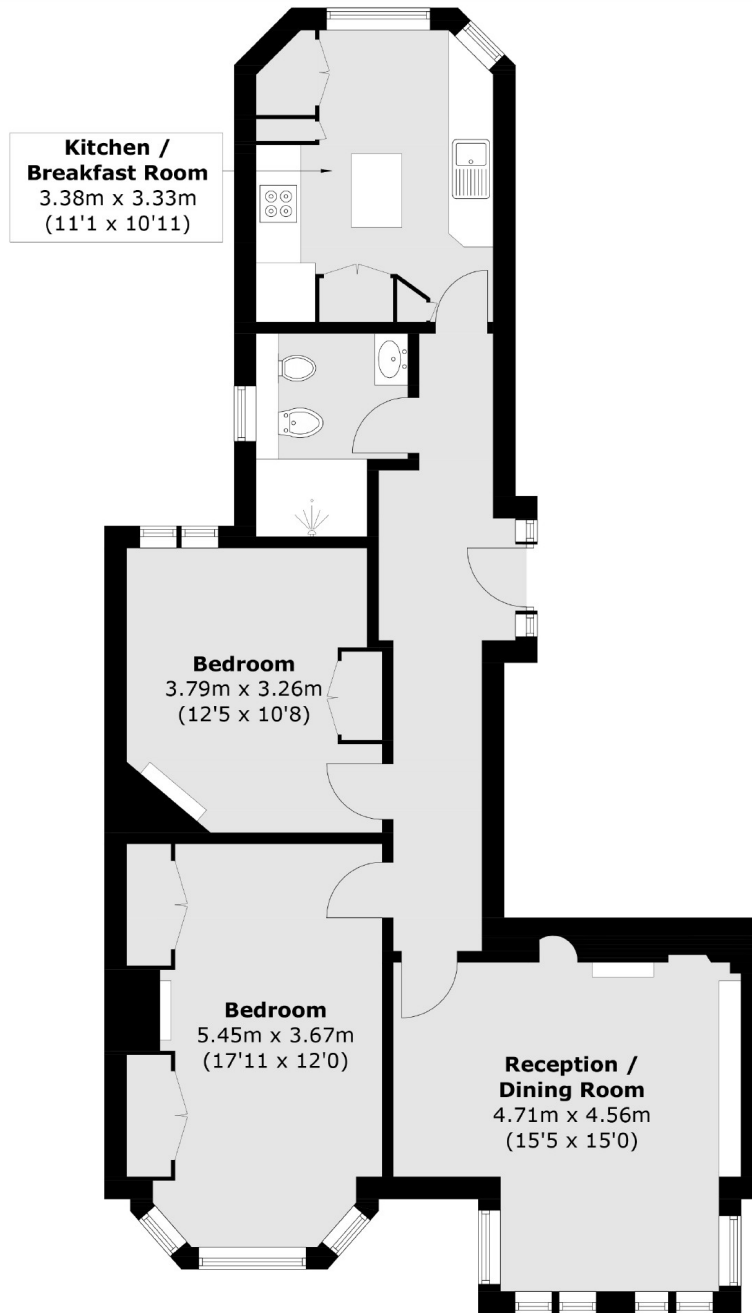
This excellent home is a great option for first time buyers, downsizers or those looking for a pied a terre and offered to the market with a share of the freehold. Hamlet Gardens is a quiet street ideally positioned between Hammersmith and Chiswick and well located for the independent restaurants and boutiques of Chiswick High Road and within easy reach of the functional retail outlets that can be found on King Street. The green flag award winning Ravenscourt Park with its green space, excellent sports facilities and locally revered W6 Garden Centre & the Thames River Path are close by. There is easy access to central London via the A4, and via the M4 for Heathrow Airport. It is well connected with Ravenscourt Park station (District line) under half a mile away offering easy access in and out of the city.

- Share Of Freehold • Popular Mansion Block • Near Ravenscourt Park •
- Excellent Condition Throughout • Separate Reception/Kitchen • Raised Ground Floor •



FLETCHERS

ESTATE AGENTS



Total area (approx.): 80.9 sq. m (870.8 sq. ft)

Fletchers Brook Green Sales
144 Shepherds Bush Road
Hammersmith
London
W6 7PB
020 7603 1415

Energy Rating: D We aim to make our particulars both accurate and reliable. However they are not guaranteed; nor do they form part of an offer or contract. If you require clarification on any points then please contact us, especially if you're traveling some distance to view. Please note that appliances and heating systems have not been tested and therefore no warranties can be given as to their good working order