

FLETCHERS

ESTATE AGENTS



Russell Gardens, W14

£400,000

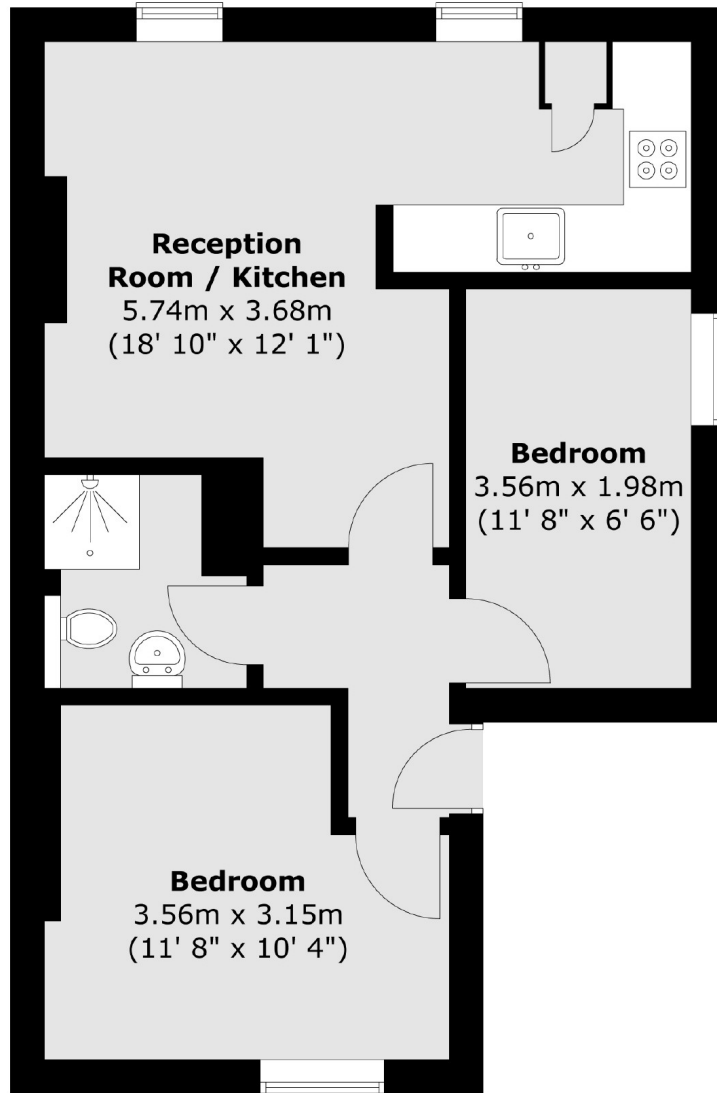
A newly renovated second floor flat situated within an imposing Victorian building moments from Kensington High Street. The flat comprises of two double bedrooms, and an updated shower room, a spacious semi open plan kitchen/reception room with large double glazed sash windows allowing for plenty of natural light and complete with a modern fitted kitchen and appliances.

An excellent choice for first time buyers & investors alike, the property is immaculately presented and represents exceptional value for money for Kensington and Chelsea. The property has a practical layout perfect for a professional couple or pied a terre. Offered to the market with a long lease and no onward chain.

Russell Gardens is a popular street in the Borough of Kensington & Chelsea only a street away from Kensington High Street renowned for its exceptional shops, bars & array of restaurants. The green spaces of Holland Park are nearby. There are excellent transport links under a mile away with Kensington Olympia Station (District Line & Overground) only a street away & Shepherds Bush (Central Line) under a mile away.

- Two Bedrooms • Long Lease • Near Kensington High Street • No Onward Chain • Refurbished • Open Plan Kitchen/Reception •

Second Floor



Total area (approx.) : 45.1 sq. m (485 sq. ft)

Fletchers Brook Green Sales
144 Shepherds Bush Road, Hammersmith, London, W6 7PB
020 7603 1415
brookgreensales@fletcherestates.com

Energy Rating: C. We aim to make our particulars both accurate and reliable. However they are not guaranteed; nor do they form part of an offer or contract. If you require clarification on any points then please contact us, especially if you're traveling some distance to view. Please note that appliances and heating systems have not been tested and therefore no warranties can be given as to their good working order.