

FLETCHERS

ESTATE AGENTS



Elsham Road, W14

£750 Per week

A three bedroom, two bathroom apartment located on Elsham Road. The property benefits from wooden floors throughout, an open plan kitchen/reception and three double sized bedrooms.



A three bedroom, two bathroom apartment located on Elsham Road. The property benefits from wooden floors throughout, an open plan kitchen/reception and three double sized bedrooms.

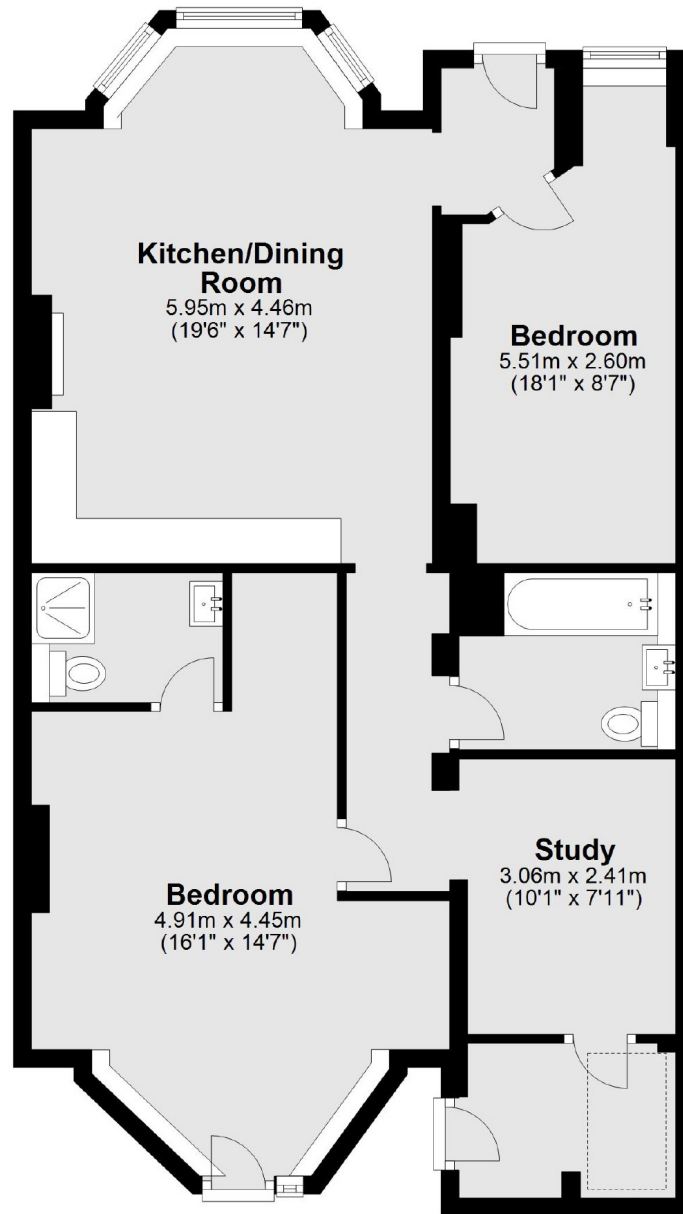
Elsham Road is a residential street located in between Shepherds Bush (Central line) tube and Kensington Olympia mainline station and tube (District line) and also gives easy access to Westfield shopping centre and Holland Park.

- Three Bedroom • Wood Flooring • Two Bathroom •
- Ample storage • Spacious Living Room • Utility Room •



FLETCHERS

ESTATE AGENTS



Total area: approx. 85.1 sq. metres (916.2 sq. feet)

Fletchers Brook Green Lettings
144 Shepherds Bush Road
Hammersmith
London
W6 7PB
020 7603 0603

Energy Rating: E We aim to make our particulars both accurate and reliable. However they are not guaranteed; nor do they form part of an offer or contract. If you require clarification on any points then please contact us, especially if you're traveling some distance to view. Please note that appliances and heating systems have not been tested and therefore no warranties can be given as to their good working order