



## Elsham Road, W14

£649,950

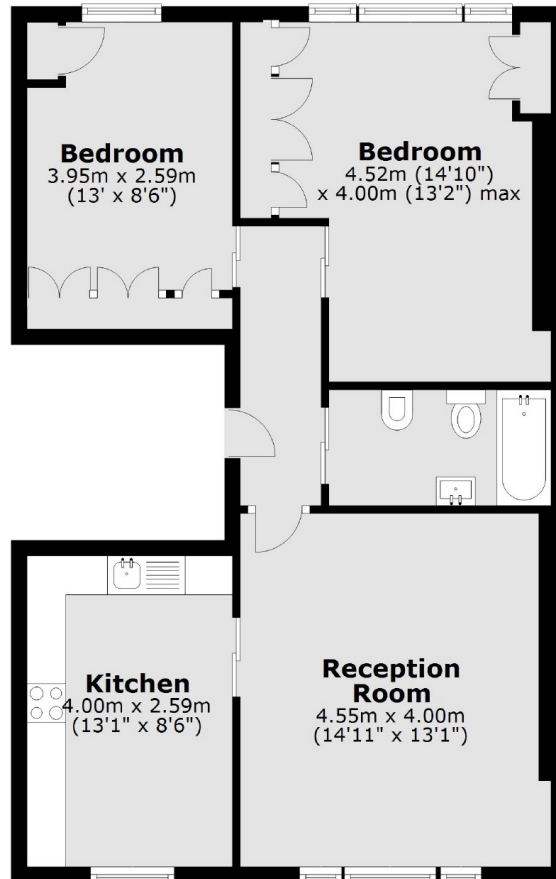
A wonderfully presented and fully modernised first floor flat within an imposing, stucco Victorian villa on the borders of Holland Park within the Royal Borough of Kensington and Chelsea. Situated in a well maintained building, the property is arranged laterally comprising of two double bedrooms to the rear with excellent views of the surrounding area and the gardens below. There is a modernised bathroom suite in the middle, and to the front of the flat a spacious and bright reception room with a separate kitchen to the right complete with high spec fitted appliances. The property benefits from excellent ceiling heights, wooden floors throughout the living areas and attractive original sash windows.

The property has been well kept by the owner and offers a great opportunity for buyers to purchase a property ready to move into in a very attractive street in Kensington and Chelsea. Offered to the market with a long lease.

Elsham Road is a quiet tree lined street in the Royal Borough of Kensington & Chelsea, with excellent access to local amenities in Holland Park, High Street Kensington and Westfield Shopping Centre. The green space of Holland Park is nearby only half a mile walk away. There are excellent transport links under half a mile away with Kensington Olympia (Overground line), and Shepherds Bush station (Overground & Central line).

• Borders Of Holland Park • Long Lease • Excellent Condition • Separate Kitchen/Reception • Quiet Residential Street • Near Kensington High Street •

## Second Floor



Total area: approx. 65.3 sq. metres (703.1 sq. feet)

Fletchers Brook Green Sales  
144 Shepherds Bush Road, Hammersmith, London, W6 7PB  
020 7603 1415  
[brookgreensales@fletcherestates.com](mailto:brookgreensales@fletcherestates.com)

Energy Rating: C. We aim to make our particulars both accurate and reliable. However they are not guaranteed; nor do they form part of an offer or contract. If you require clarification on any points then please contact us, especially if you're traveling some distance to view. Please note that appliances and heating systems have not been tested and therefore no warranties can be given as to their good working order.