

FLETCHERS

ESTATE AGENTS



Sinclair Gardens, W14

£650,000

A stunning two bedroom conversion flat in an imposing Victorian building in the heart of Brook Green. This excellent property is situated on the raised ground floor and benefits from fantastic ceiling heights throughout. The open plan kitchen/reception has been recently refurbished with fitted appliances and space for a large dining table. This room is complete with feature bay window providing an abundance of natural light.

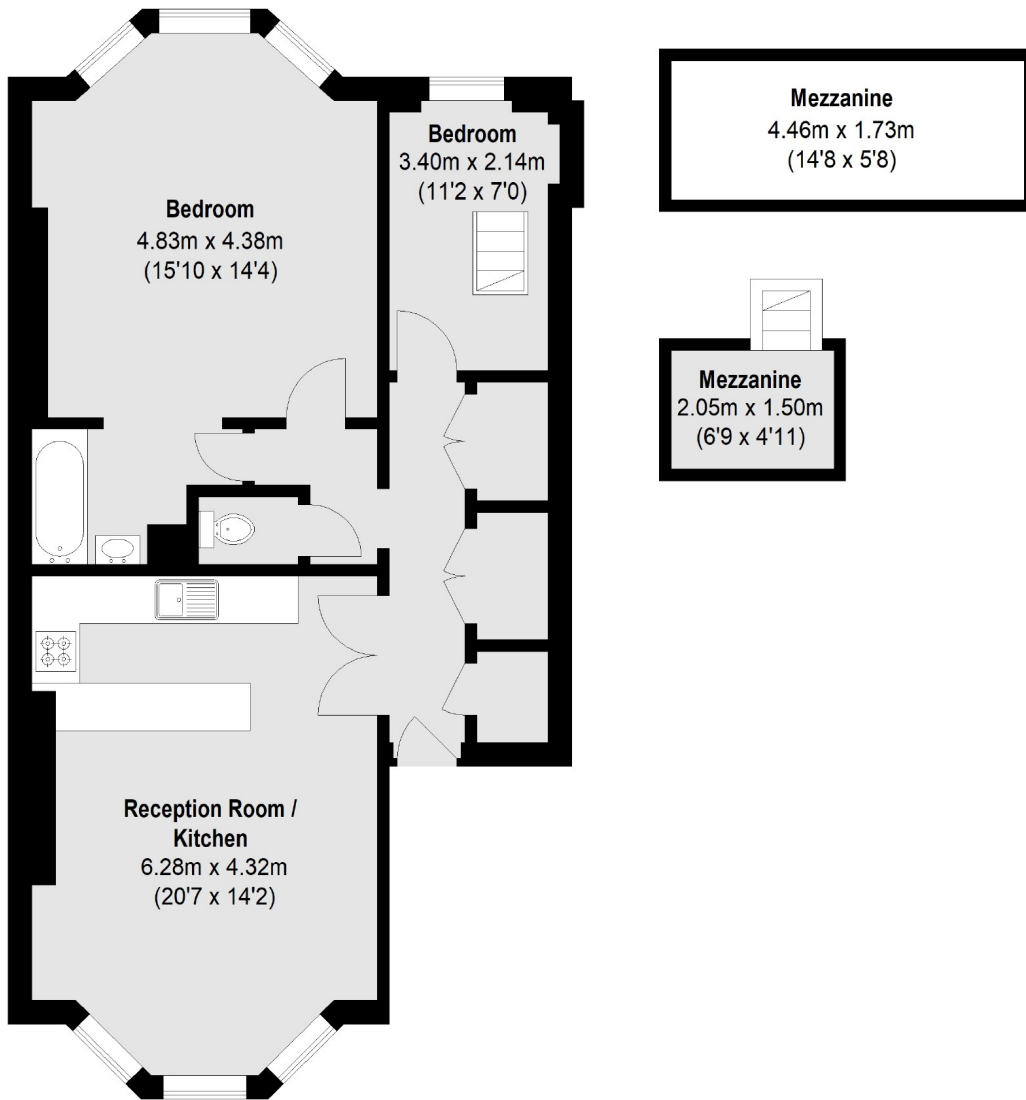
There is excellent storage in the flat with the property benefitting from both its own separate, demised storage cupboard & several built in floor to ceiling storage cupboards in the hall. There are two double bedrooms with the master bedroom also benefitting from a feature bay window overlooking well kept gardens behind. The flat is offered with a share of freehold.

Sinclair Gardens is a popular tree lined street in Brook Green. Superbly positioned for easy access to the green open spaces of Holland Park. It is also excellently positioned for the amenities, bars and restaurants of both Westfield Shopping Centre & Kensington High Street as well as the more independent, eclectic boutiques of Blythe Road. It is also under a mile from Shepherds Bush Station (Central and Overground Lines). Being located on the same street as Kensington Olympia, it is well positioned to benefit from the redevelopment also offered here.

- Two Bedroom Flat • Raised Ground Floor • Period Conversion • Open Plan Living Space • Excellent Location • High Ceilings •

FLETCHERS

ESTATE AGENTS



Ground Floor

Total area (approx.): 71.21 sq. m (766 Sq. ft)
Mezzanine: 3.52 sq. m (38 Sq. ft)

Fletchers Brook Green Sales
144 Shepherds Bush Road, Hammersmith, London, W6 7PB
020 7603 1415
brookgreensales@fletcherestates.com

Energy Rating: D. We aim to make our particulars both accurate and reliable. However they are not guaranteed; nor do they form part of an offer or contract. If you require clarification on any points then please contact us, especially if you're traveling some distance to view. Please note that appliances and heating systems have not been tested and therefore no warranties can be given as to their good working order.