

FLETCHERS

ESTATE AGENTS



Grove Mews, W6

£1,000,000

Set within a quiet mews in the heart of Brackenbury Village is this charming, end of terrace and fully renovated, cottage. This exceptional home has been fully renovated by the current owners and is ready for a buyer to move straight in. You enter the house into a large open plan kitchen/reception room perfect for entertaining that has been thoughtfully designed to suit modern living is complete with fitted appliances. This lovely space has been tastefully styled with wood floor throughout, partially exposed brick work and a large kitchen island separating the kitchen and living space with plenty of storage. In the centre of the room there are large french doors that open out into a private west facing, courtyard garden. This floor also benefits from a guest W/C and plenty of storage space under the stairs.

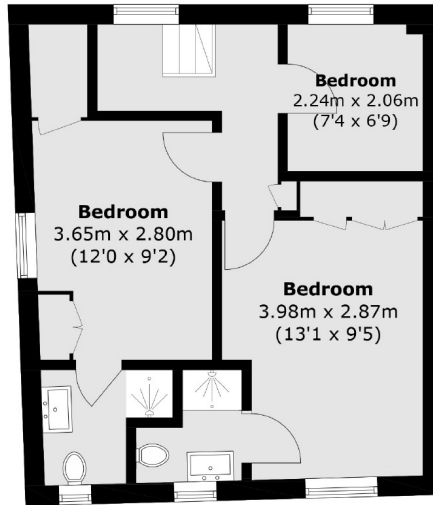
To the left of the garden door there is a newly fitted wooden staircase which lead onto the second floor. Upstairs, there are two generously sized double bedrooms and an additional bedroom that works perfectly as a study. Both of the double rooms benefit from having bespoke, built in storage & both have their own en suite bathrooms. This well-appointed and fantastically located home is offered to the market freehold.

In the heart of Brackenbury Village and located just off the ever popular Hammersmith Grove is Grove Mews. Positioned superbly for the local amenities within the village as well as the excellent local transport links in and out of the city. Brackenbury Road and Hammersmith Grove have an array of independent restaurants, butchers, pubs and cafés and the more functional larger supermarkets and retail outlets can be found on Kings Street half a mile away. The house is also within a half a mile of Hammersmith tube station (District, Piccadilly, Hammersmith&City and Circle lines). It is also close by to some exception local schools, John Betts, Brackenbury and West London Free to name a few.

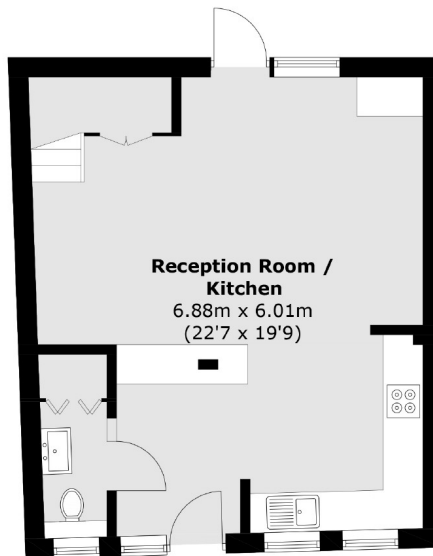
• Brackenbury Village • Freehold Mews House • Two En Suite Bathrooms • Large West Facing Garden • Fully Renovated Throughout • No Onward Chain •

FLETCHERS

ESTATE AGENTS



First Floor



Ground Floor

Total area (approx.): 82.1 sq. m (883.7 sq. ft)

Fletchers Brook Green Sales
144 Shepherds Bush Road, Hammersmith, London, W6 7PB
020 7603 1415
brookgreensales@fletcherestates.com

Energy Rating: D. We aim to make our particulars both accurate and reliable. However they are not guaranteed; nor do they form part of an offer or contract. If you require clarification on any points then please contact us, especially if you're traveling some distance to view. Please note that appliances and heating systems have not been tested and therefore no warranties can be given as to their good working order.