

FLETCHERS

ESTATE AGENTS



Lakeside Road, W14

£850,000

An exceptional, two bedroom conversion flat spanning two stunning Victorian buildings in the heart of Brook Green. Situated on the raised ground floor and arranged laterally, the property benefits from fantastic ceiling height throughout and maintains many of the original period features. The semi open plan kitchen/reception has been meticulously renovated and eclectically styled by the current owners complete with high spec fitted appliances, plenty of space for a large dining table and a large sash window overlooking the gardens to the rear. The reception room is an excellent entertaining space coming complete with an attractive feature bay window facing the front and providing plenty of natural light to this space.

To the rear, there is a large master bedroom benefitting from lots of bespoke, built in storage that makes good use of the ceiling height as well as another feature bay window. The second room is also a generous double and has plenty of built in storage. The flat also benefits from a recently modernised bathroom suite, a separate but also equally well renovated separate W/C and a utility cupboard too. The flat is offered with a long lease and access to a communal garden at the rear of the building.

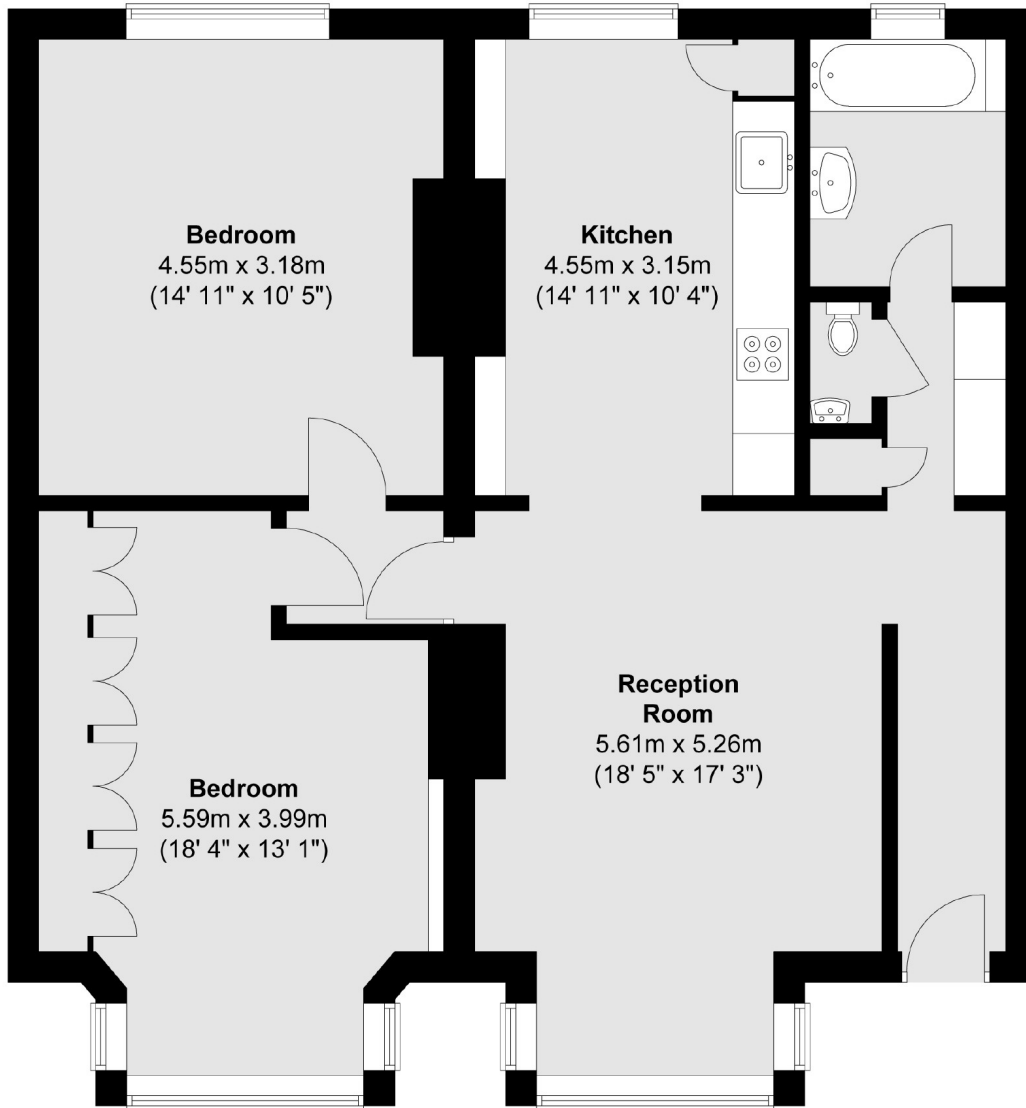
Lakeside Road is a quiet street in the heart of Brook Green. Superbly positioned for easy access to the green open spaces of Holland Park & Brook Green. It is also excellently positioned for the amenities, bars and restaurants of both Westfield Shopping Centre & Kensington High Street as well as the more independent, eclectic boutiques of Blythe Road. It is also under a mile from Shepherds Bush Station (Central and Overground Lines). Being located only several streets from Kensington Olympia, it is well positioned to benefit from the redevelopment offered here.

• Laterally Arranged • Excellent Condition Throughout • Heart Of Brook Green • Communal Garden • High Ceilings & Period Features • Plenty Of Storage •

FLETCHERS

ESTATE AGENTS

Ground Floor



Total area (approx.) : 91.6 sq. m (986 sq. ft)

Fletchers Brook Green Sales
144 Shepherds Bush Road, Hammersmith, London, W6 7PB
020 7603 1415
brookgreensales@fletcherestates.com

Energy Rating: C. We aim to make our particulars both accurate and reliable. However they are not guaranteed; nor do they form part of an offer or contract. If you require clarification on any points then please contact us, especially if you're traveling some distance to view. Please note that appliances and heating systems have not been tested and therefore no warranties can be given as to their good working order.