

# FLETCHERS

ESTATE AGENTS



## Lime Grove, W12

£519 Per week (£2,249 pcm)

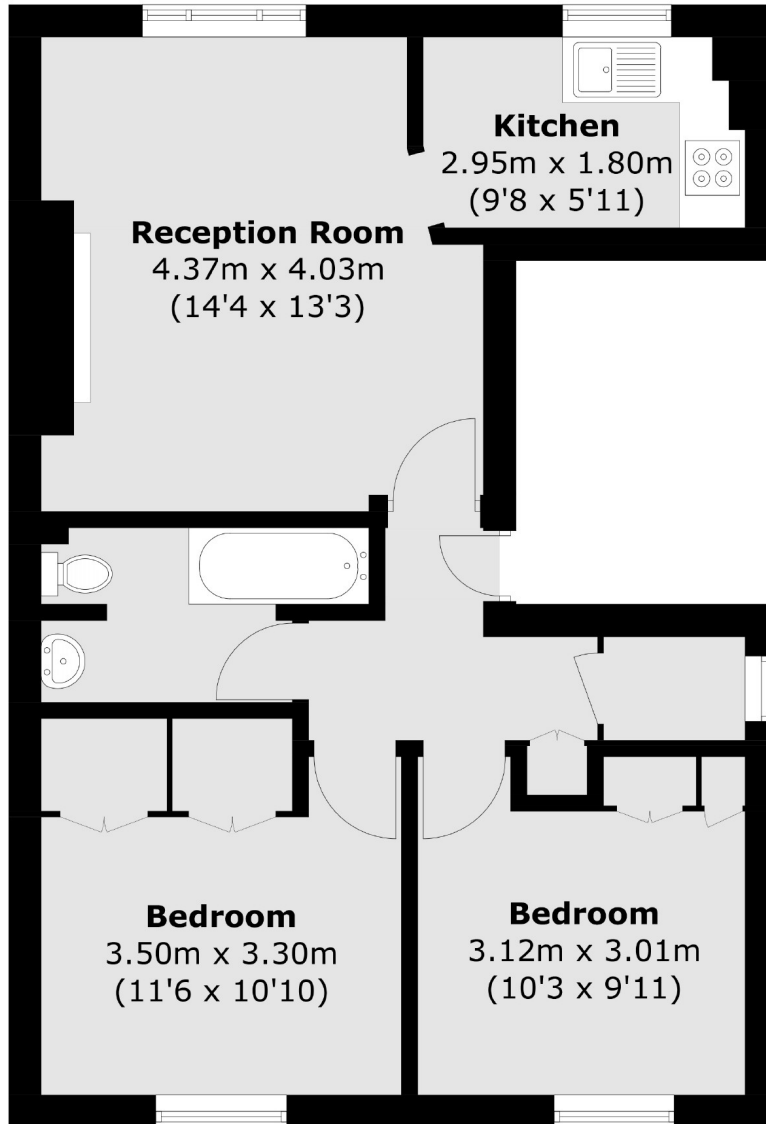
This neutrally decorated two bedroom flat, based within a well maintained period conversion, offers a bright and spacious reception, two double bedroom and modern bathroom.

Lime Grove is situated between Goldhawk Road and Uxbridge Road and has various links to multiple transport hubs connecting you all over London.

- Two Double Bedrooms • Ample Storage • Neutral Decor • High Ceilings • Period Conversion • Great Location •

# FLETCHERS

ESTATE AGENTS



Total area (approx.): 53.7 sq. m (578.0 sq. ft)

Fletchers Brook Green Lettings  
144 Shepherds Bush Road, Hammersmith, London, W6 7PB  
020 7603 0603  
[brookgreenlettings@fletcherestates.com](mailto:brookgreenlettings@fletcherestates.com)

Energy Rating: D. We aim to make our particulars both accurate and reliable. However they are not guaranteed; nor do they form part of an offer or contract. If you require clarification on any points then please contact us, especially if you're traveling some distance to view. Please note that appliances and heating systems have not been tested and therefore no warranties can be given as to their good working order.