

FLETCHERS

ESTATE AGENTS



Richmond Way, W12

£1,234 Per week (£5,350 pcm)

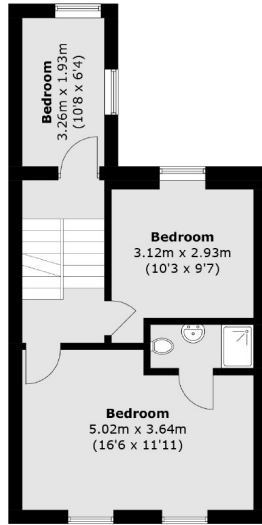
A large five bedroom house split over four floors with a private terrace and large garden. The property offers five double bedrooms, a double reception a fully integrated kitchen and three bathrooms.

Richmond Way is well located for the independent restaurants and boutiques of Brook Green most of which are stationed on nearby Blythe Road. It is also superbly positioned for easy access to the green space of Holland Park and Brook Green & the excellent amenities, bars and restaurants, Westfield Shopping Centre has to offer. It is also under a mile from Shepherds Bush Station (Central line and Overground) and Kensington Olympia (District Line).

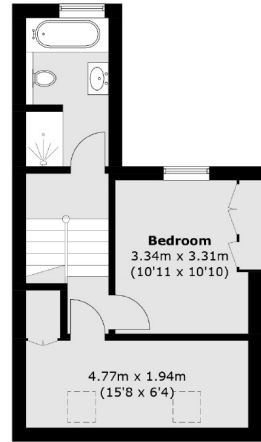
- Five Bedroom House • Central Line Zone Two • Three Bathrooms • Large Garden • Private Terrace • Separate Utility Room •

FLETCHERS

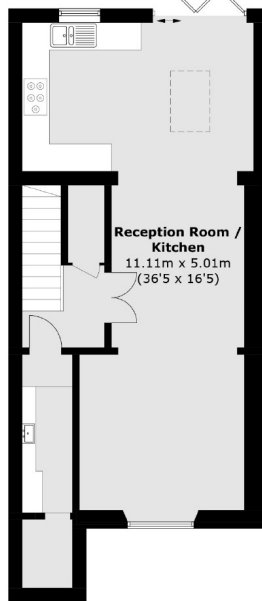
ESTATE AGENTS



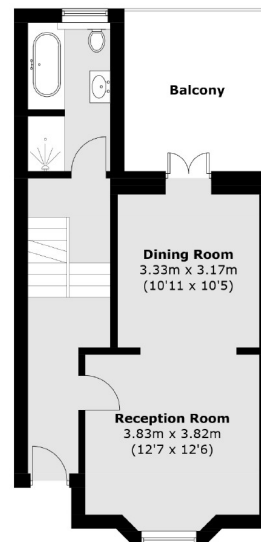
First Floor



Second Floor



Lower Ground Floor



Raised Ground Floor

Total area (approx.): 172.8 sq. m (1,859.8 sq. ft)
Balcony area : 11.2 sq. m (120.5 sq. ft)

Fletchers Brook Green Lettings
144 Shepherds Bush Road, Hammersmith, London, W6 7PB
020 7603 0603
brookgreenlettings@fletcherestates.com

Energy Rating: C. We aim to make our particulars both accurate and reliable. However they are not guaranteed; nor do they form part of an offer or contract. If you require clarification on any points then please contact us, especially if you're traveling some distance to view. Please note that appliances and heating systems have not been tested and therefore no warranties can be given as to their good working order.