



Beadon Road, W6

£807 Per week (£3,500 pcm)

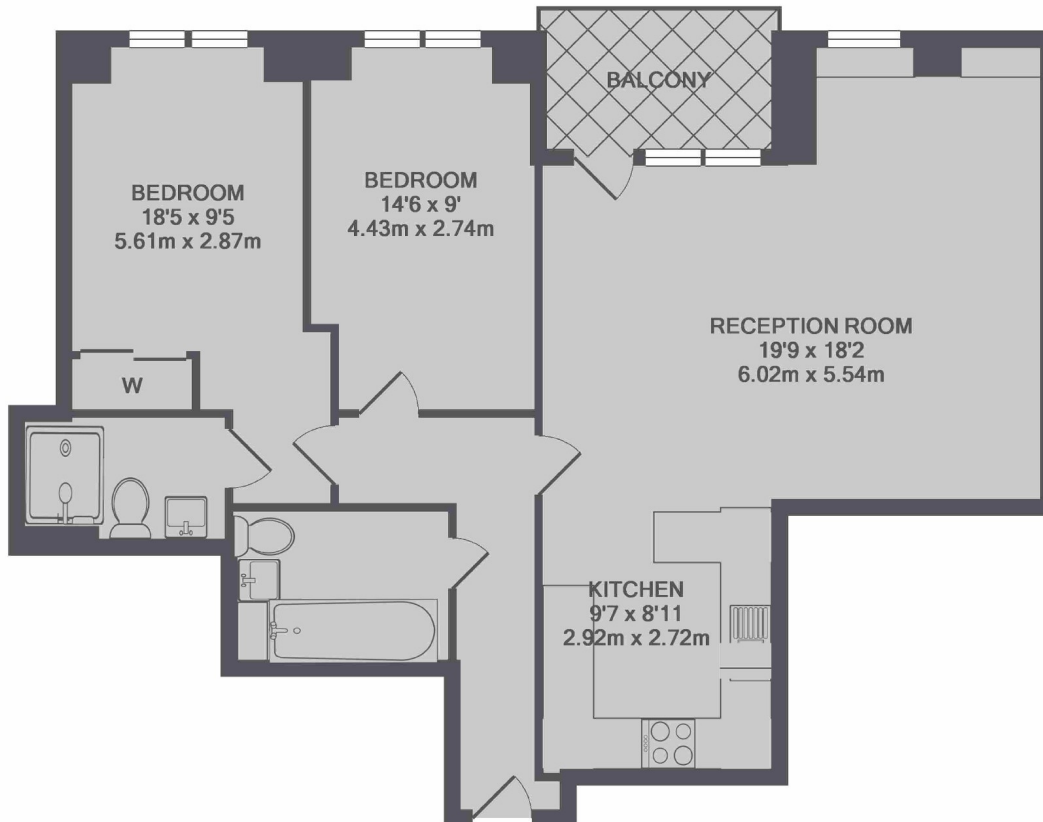
A brand new two double bedroom, two bathroom apartment in Hammersmith's Sovereign Court development. This 8th floor property also has a spacious open plan reception and fully equipped contemporary kitchen and a private balcony and residents benefit from concierge services and a private gym.

Beadon Road is a short walk from King Street for a large selection of shops and restaurants and only 0.1 miles from four different tube lines from Hammersmith Broadway.

- Brand New Development • Two Double Bedrooms • Two Bathrooms • Balcony • Concierge & Gym • Hammersmith Broadway •

FLETCHERS

ESTATE AGENTS



TOTAL APPROX. FLOOR AREA 865 SQ.FT. (80.3 SQ.M.)

Fletchers Brook Green Lettings
144 Shepherds Bush Road, Hammersmith, London, W6 7PB
020 7603 0603
brookgreenlettings@fletcherestates.com

Energy Rating: D. We aim to make our particulars both accurate and reliable. However they are not guaranteed; nor do they form part of an offer or contract. If you require clarification on any points then please contact us, especially if you're traveling some distance to view. Please note that appliances and heating systems have not been tested and therefore no warranties can be given as to their good working order.