

# FLETCHERS

ESTATE AGENTS



## Godolphin Road, W12

£530 Per week (£2,300 pcm)

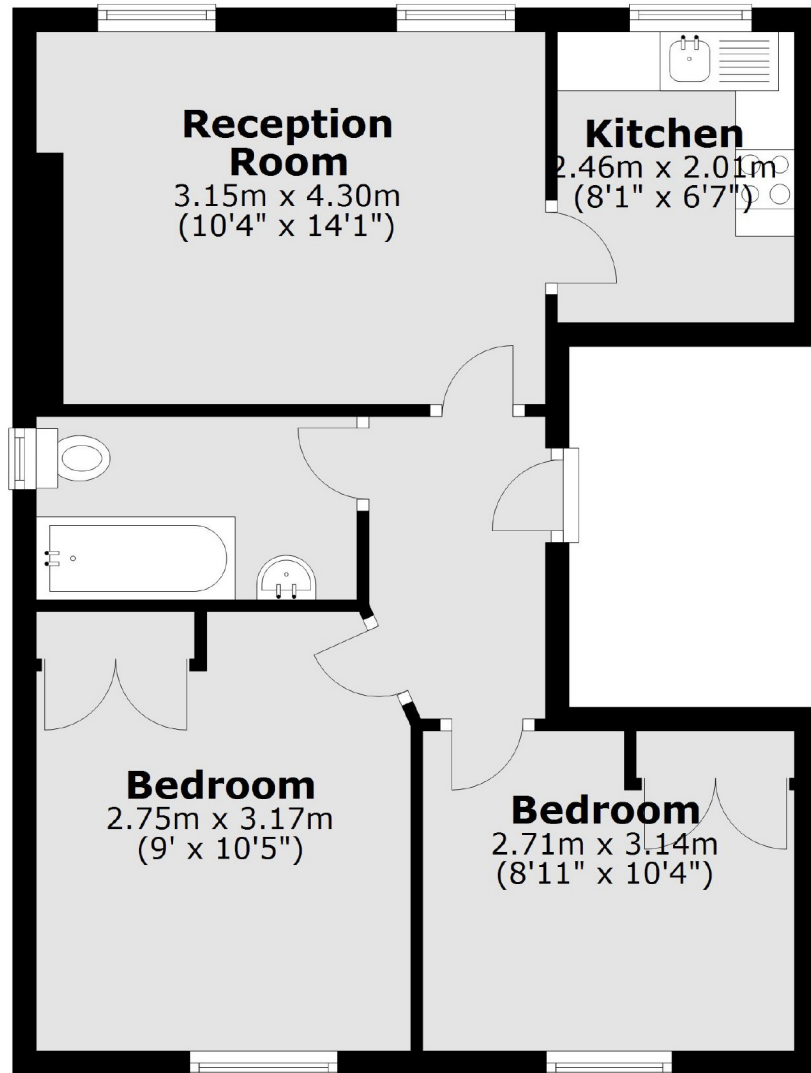
A two double bedroom apartment available in the heart of Shepherds Bush. The property benefits from two equally sized rooms, ample storage throughout and a separate kitchen/reception.

Godolphin Road is located in the heart of Shepherds Bush and in easy commute an array of local amenities, various transport hubs, connecting to all over London and Westfield Shopping Centre.

- Furnished • Separate Kitchen/Reception • Ample Storage • Transport Links • Double Bedrooms • Spacious Reception •

# FLETCHERS

ESTATE AGENTS



Total area: approx. 48.0 sq. metres (516.3 sq. feet)

Fletchers Brook Green Lettings  
144 Shepherds Bush Road, Hammersmith, London, W6 7PB  
020 7603 0603  
[brookgreenlettings@fletcherestates.com](mailto:brookgreenlettings@fletcherestates.com)

Energy Rating: C. We aim to make our particulars both accurate and reliable. However they are not guaranteed; nor do they form part of an offer or contract. If you require clarification on any points then please contact us, especially if you're traveling some distance to view. Please note that appliances and heating systems have not been tested and therefore no warranties can be given as to their good working order.