

FLETCHERS

ESTATE AGENTS



Elsham Road, W14

£799,950

A stunning two bedroom, two bathroom converted flat situated within an attractive Victorian villa on the borders of Holland Park and in the Royal Borough of Kensington and Chelsea. This spacious and bright flat comprises of a large, open plan kitchen/reception area that has been refurbished and comes complete with fitted appliances and space for a large dining table. This wonderful entertaining space is complete with an attractive feature bay window overlooking the well kept, west facing communal garden to the front.

To the rear, there are two double bedrooms with the master bedroom benefiting from space to create a walk in wardrobe and use of its own en suite bathroom. The second bedroom is a further double with feature bay window and there is another shower room in the hallway nearby. Both bedrooms benefit from access to a further courtyard garden space to the front which benefits from access onto Holland Road as well.

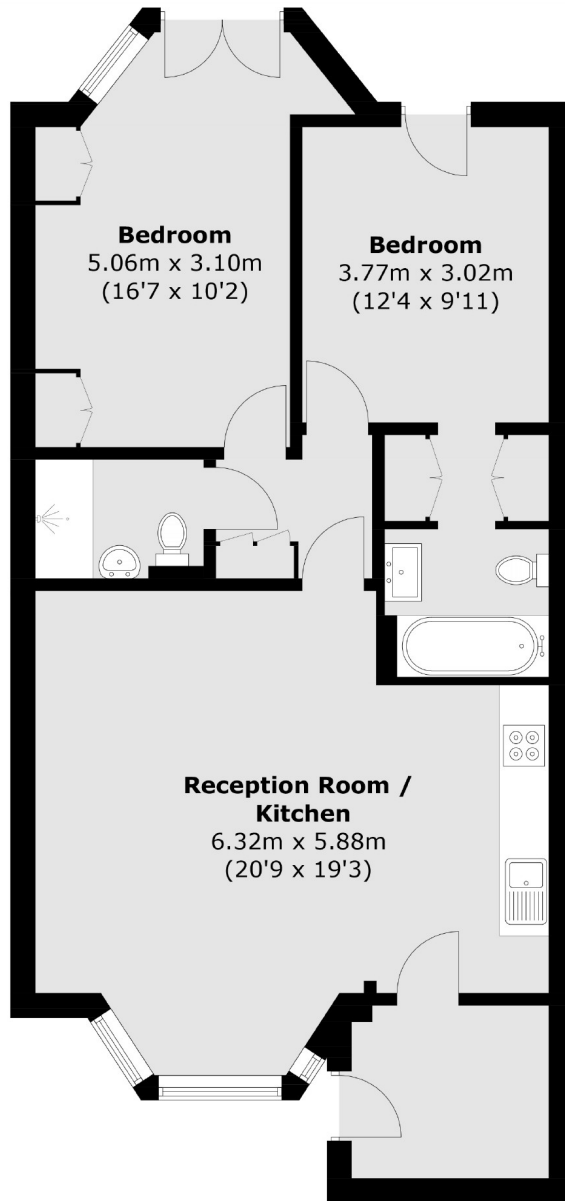
The flat is offered to the market with a share of freehold and no onward chain.

Elsham Road is a quiet tree lined street in the Royal Borough of Kensington & Chelsea, with excellent access to local amenities in Holland Park, High Street Kensington and Westfield Shopping Centre. The green space of Holland Park is nearby only half a mile walk away. There are excellent transport links under half a mile away with Kensington Olympia (Overground line), and Shepherds Bush station (Overground & Central line).

- Two Double Bedrooms • Two Bathrooms • Plenty Of Natural Light • West Facing Communal Garden • Share Of Freehold • No Onward Chain •

FLETCHERS

ESTATE AGENTS



Total area (approx.): 77.0 sq. m (828.8 sq. ft)

Fletchers Brook Green Sales
144 Shepherds Bush Road, Hammersmith, London, W6 7PB
020 7603 1415
brookgreensales@fletcherstates.com

Energy Rating: C. We aim to make our particulars both accurate and reliable. However they are not guaranteed; nor do they form part of an offer or contract. If you require clarification on any points then please contact us, especially if you're traveling some distance to view. Please note that appliances and heating systems have not been tested and therefore no warranties can be given as to their good working order.