

# FLETCHERS

ESTATE AGENTS



## Elsham Road, W14

£690 Per week (£3000 pcm)

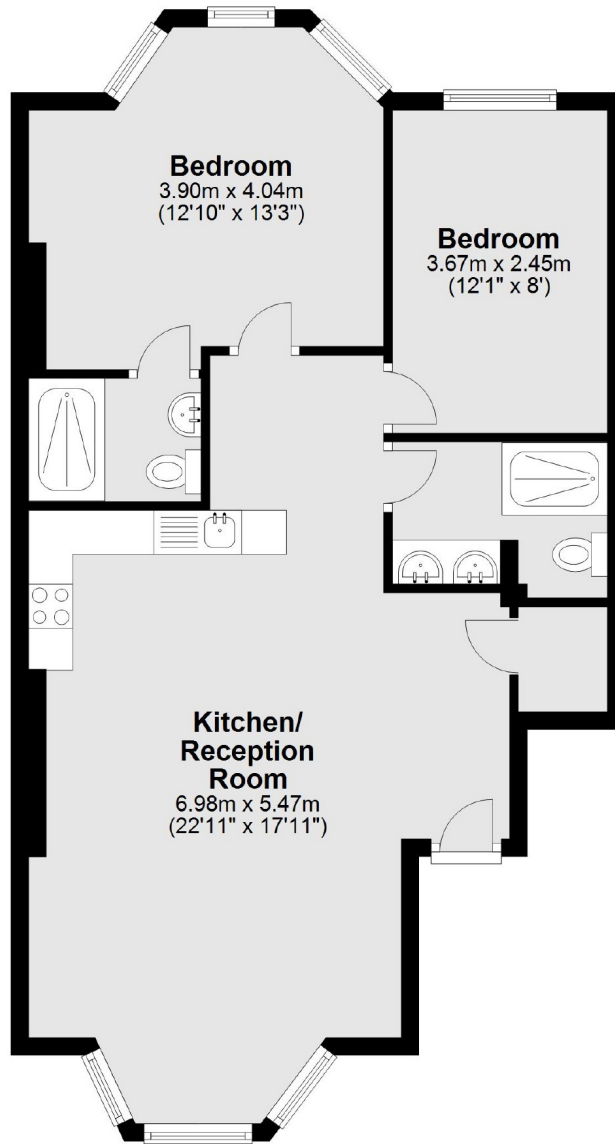
This raised ground floor two bedroom apartment has been newly redecorated throughout. The property benefits from an extra en-suite bathroom and a spacious open plan lounge.

Elsham Road is conveniently located between Shepherds Bush and Kensington High Street. With easy access to Westfields Shopping Centre and Kensington Olympia.

- Wood Floors • Two Bathrooms • High Ceilings • Modern Decor • Ample Storage • Great Location •

# FLETCHERS

ESTATE AGENTS



Total area: approx. 66.7 sq. metres (718.3 sq. feet)

Fletchers Brook Green Lettings  
144 Shepherds Bush Road, Hammersmith, London, W6 7PB  
020 7603 0603  
[brookgreenlettings@fletcherestates.com](mailto:brookgreenlettings@fletcherestates.com)

Energy Rating: C. We aim to make our particulars both accurate and reliable. However they are not guaranteed; nor do they form part of an offer or contract. If you require clarification on any points then please contact us, especially if you're traveling some distance to view. Please note that appliances and heating systems have not been tested and therefore no warranties can be given as to their good working order.