

FLETCHERS

ESTATE AGENTS



Earsby Street, W14

£999,950

A large, well presented, apartment situated within an imposing Mansion block near Kensington Olympia. Arranged laterally, this spacious property benefits from a large kitchen/diner and separate reception room, three double bedrooms, the master complete with en suite bathroom, and a south facing aspect offering plenty of natural light. The property also benefits from the use of a separate side access into the building and high ceilings throughout.

The apartment has been modernised well while retaining an abundance of period features and is located to the rear of the building overlooking the quiet Bishops Kings Road. The building benefits from the use of a porter, a bike store and lift access and the property is being sold with a share of the freehold.



A large, well presented, apartment situated within an imposing Mansion block near Kensington Olympia. Arranged laterally, this spacious property benefits from a large kitchen/diner and separate reception room, three double bedrooms; with the master complete with en suite bathroom, and a south facing aspect offering plenty of natural light. The property also benefits from the use of a separate side access into the building and high ceilings throughout.

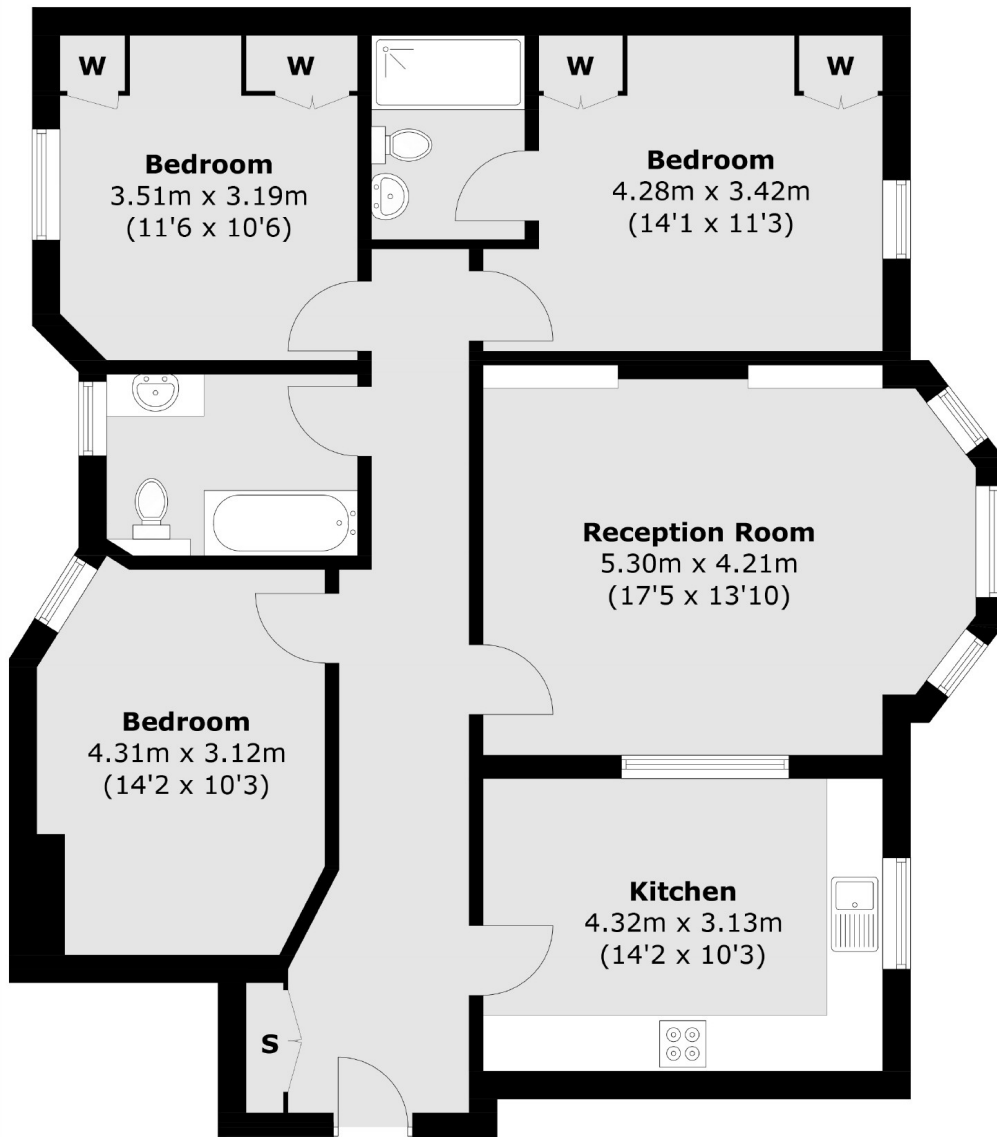
The apartment has been modernised well while retaining an abundance of period features and is located to the rear of the building overlooking the quiet Bishops Kings Road. The building benefits from the use of a porter, a bike store and lift access and the property is being sold with a share of the freehold. Palace Mansions is located exceptionally for transport and local amenities being only 300m from Kensington Olympia station (District line). The property is under a mile from Kensington High Street with it's fabulous selection of designer boutiques, quality restaurants and wonderful food retailers. There are a good selection of outstanding private and state schools nearby, including St James Prep & Senior School, Avonmore Primary and the catchment for Kensington Primary Academy.

- Three Double Bedrooms • Two Bathrooms • Large Kitchen/Diner •
- High Ceilings • Kensington Olympia • Share Of Freehold •



FLETCHERS

ESTATE AGENTS



Ground Floor

Total area (approx.): 99.6 sq. m (1,072.1 sq. ft)

Fletchers Brook Green Sales
144 Shepherds Bush Road
Hammersmith
London
W6 7PB
020 7603 1415

Energy Rating: C We aim to make our particulars both accurate and reliable. However they are not guaranteed; nor do they form part of an offer or contract. If you require clarification on any points then please contact us, especially if you're traveling some distance to view. Please note that appliances and heating systems have not been tested and therefore no warranties can be given as to their good working order