

FLETCHERS

ESTATE AGENTS



Brook Green, W6

£1,350,000

A rare opportunity to purchase a spectacular and unique, split level apartment in one of the areas most desirable mansion blocks overlooking Brook Green. Arranged over two floors this stunning property has been meticulously renovated by the current owner and has access to a private, south facing terrace overlooking the atrium of gardens of the surrounding roads to the rear.

To your right as you enter you have a recently modernised & high spec kitchen complete with fitted appliances and to your left a spacious dining room overlooking Brook Green. This room leads through into a wonderful reception room with double height ceilings, a stunning semi circular feature window and an open stair case leading to the second floor. The 1st level consists of a generous master bedroom with floor to ceiling built in storage and a state of the art en suite bathroom complete with walk in shower, a downstairs guest cloakroom and plenty of storage for coats and shoes in the hallway cupboards.

On the second floor of the flat you have a further bedroom also complete with a modernised en suite bathroom, a study room and access out onto the private terrace. This exceptional home is offered to the market with no onward chain and a share of the freehold.



A rare opportunity to purchase a spectacular and unique, split level apartment in one of the areas most desirable mansion blocks overlooking Brook Green. Arranged over two floors this stunning property has been meticulously renovated by the current owner and has access to a private, south facing terrace overlooking the atrium of gardens of the surrounding roads to the rear.

To your right as you enter you have a recently modernised & high spec kitchen complete with fitted appliances and to your left a spacious dining room overlooking Brook Green. This room leads through into a wonderful reception room with double height ceilings, a stunning semi circular feature window and an open stair case leading to the second floor. The 1st level consists of a generous master bedroom with floor to ceiling built in storage and a state of the art en suite bathroom complete with walk in shower, a downstairs guest cloakroom and plenty of storage for coats and shoes in the hallway cupboards.

On the second floor of the flat you have a further double bedroom also complete with a modernised en suite bathroom, a study room and access out onto the private terrace. This exceptional home is offered to the market with no onward chain and a share of the freehold.

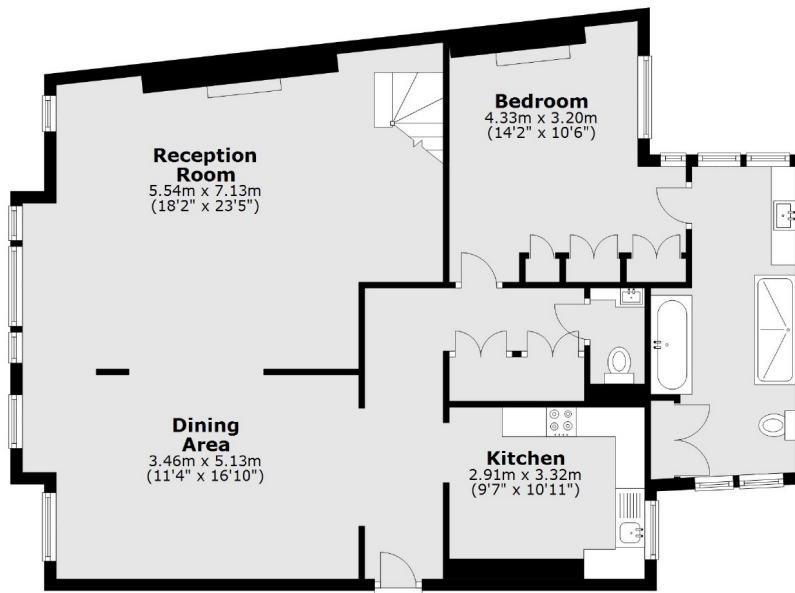
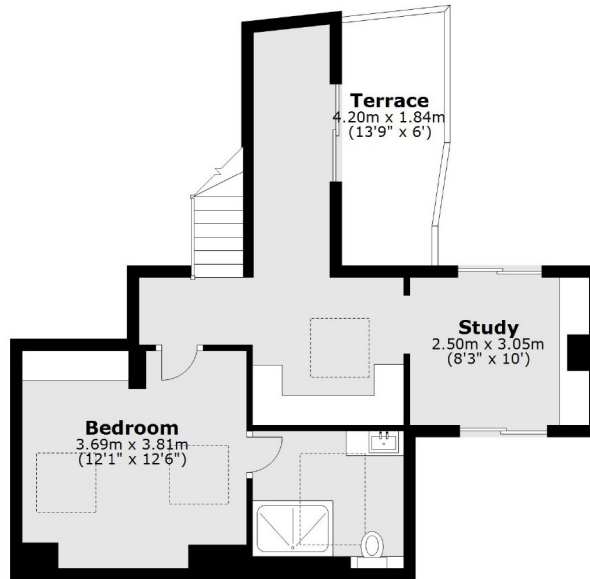
Queen's Mansions is a highly sought after mansion block located on Brook Green and offering uninterrupted views over this popular green space. The area is known for its excellent independent restaurants and boutiques and within easy reach of the world renowned amenities of Westfield London, Holland Park and Kensington High Street. The flat is also under a mile from Hammersmith Underground Station & Kensington Olympia Station offering easy access in and out of the city. It is also within a short walk of some of the borough's most prestigious schools, St.Paul's Girls School & Ecole Francaise Jacques Prevert to name a few.

- Highly Sought After Block • Unique Property • Exceptional Condition •



FLETCHERS

ESTATE AGENTS



Total area: approx. 147.5 sq. metres (1588.0 sq. feet)

Fletchers Brook Green Sales
144 Shepherds Bush Road
Hammersmith
London
W6 7PB
020 7603 1415

Energy Rating: D We aim to make our particulars both accurate and reliable. However they are not guaranteed; nor do they form part of an offer or contract. If you require clarification on any points then please contact us, especially if you're traveling some distance to view. Please note that appliances and heating systems have not been tested and therefore no warranties can be given as to their good working order