



Bramley Road, W10

£1 Per week

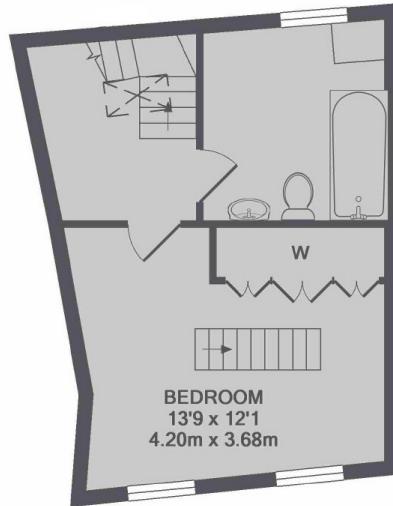
A recently decorated two double bedroom maisonette laid over three floors with a large private roof terrace, two bathrooms and a semi open plan kitchen.

Situated close to all amenities of Ladbroke Grove, Holland Park and Shepherds Bush with Latimer Road station only 460 feet away and Westfield shopping centre only 0.4 miles away.

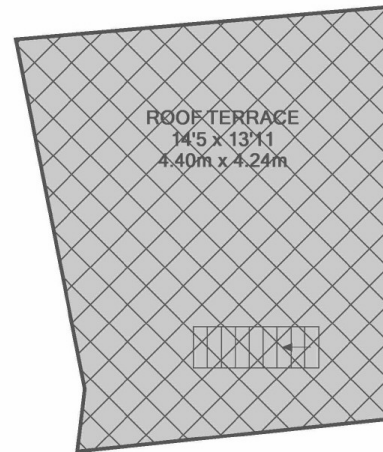
Features

- Two Double Bedrooms
- Private Roof Terrace
- Two Bathrooms
- Open Plan Kitchen
- Split Level Maisonette
- High Ceilings

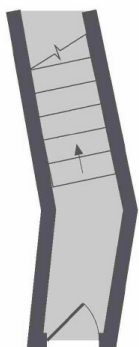
Bramley Road, London, W10



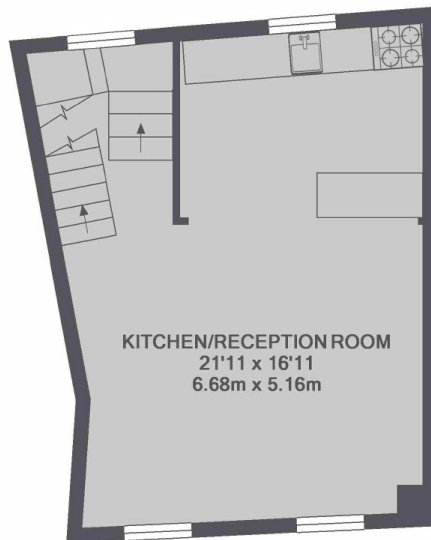
3RD FLOOR



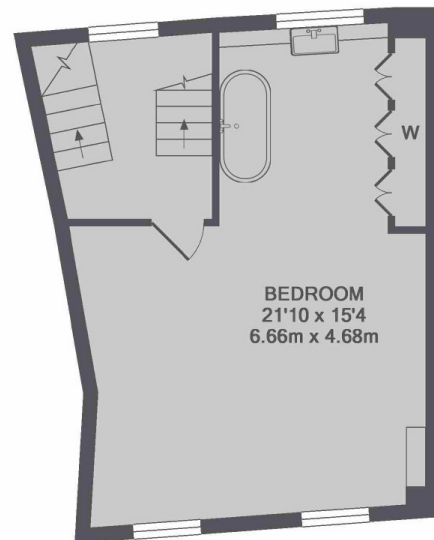
ROOF TERRACE



GROUND FLOOR



1ST FLOOR



2ND FLOOR

TOTAL APPROX. FLOOR AREA 1064 SQ.FT. (98.8 SQ.M.)

Dexters

Notting Hill
121-123 Notting Hill Gate
London
W11 3LB
Lettings
020 7792 0792

Energy Rating: E. We aim to make our particulars both accurate and reliable. However they are not guaranteed; nor do they form part of an offer or contract. If you require clarification on any points then please contact us, especially if you're traveling some distance to view. Please note that appliances and heating systems have not been tested and therefore no warranties can be given as to their good working order.

 **RICS** | Regulated
Estate Agent
and Letting Agent

dexters.co.uk