



Tavistock Crescent, W11

£692 Per week

Located just off vibrant Portobello Road, this spacious split-level three-bedroom apartment offers 1,100 sq ft of well-designed living space. The property features two contemporary bathrooms, a generous open-plan living and dining area, and a private patio garden perfect for relaxing or entertaining. With its modern finishes and superb location, this home combines comfort, style, and convenience in one exceptional package.

Ideally positioned for excellent transport links, the apartment is just 0.2 miles from Westbourne Park Tube Station, 0.5 miles from Ladbroke Grove Station, and 0.8 miles from Notting Hill Gate Station, ensuring easy access across London.

Features

- Three Double Bedrooms
- Two Bathrooms
- Suitable For Sharers
- Modern Building
- Professionally Managed
- Private Patio Garden
- Good Transport Links
- Split Level
- 1100+ Square Feet



Tavistock Crescent, W11



Tavistock Crescent, London, W11

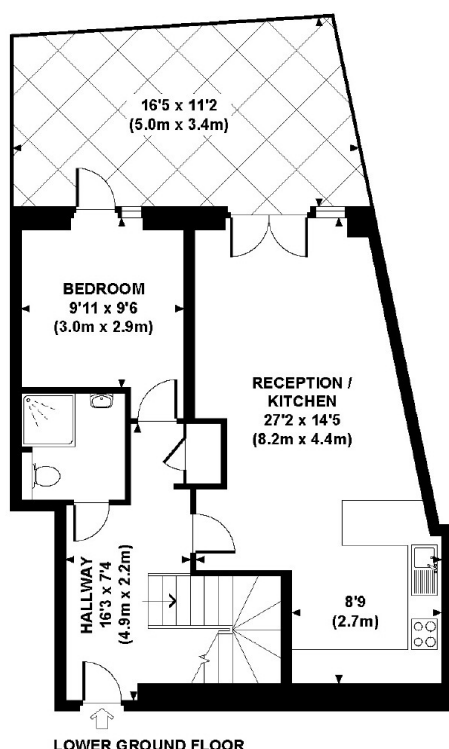
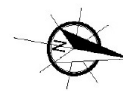
TAVISTOCK CRESCENT, W11

Approx. gross internal area

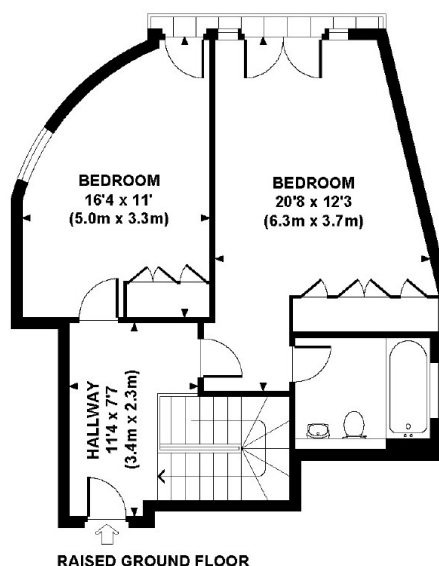
1138 Sq Ft. / 105.7 Sq M.

Representation of current layout.

Not to scale.



LOWER GROUND FLOOR



RAISED GROUND FLOOR

Dexters

Notting Hill
121-123 Notting Hill Gate
London
W11 3LB

Lettings
020 7792 0792

Energy Rating: D. We aim to make our particulars both accurate and reliable. However they are not guaranteed; nor do they form part of an offer or contract. If you require clarification on any points then please contact us, especially if you're traveling some distance to view. Please note that appliances and heating systems have not been tested and therefore no warranties can be given as to their good working order.



[dexters.co.uk](https://www.dexters.co.uk)