



Portobello Court, W11

£611 Per week

Dexters



Portobello Court, W11

A bright and spacious two double bedroom flat situated on the sixth floor (with lift access) of this well maintained building conveniently positioned on Westbourne Grove, just off Portobello Road.

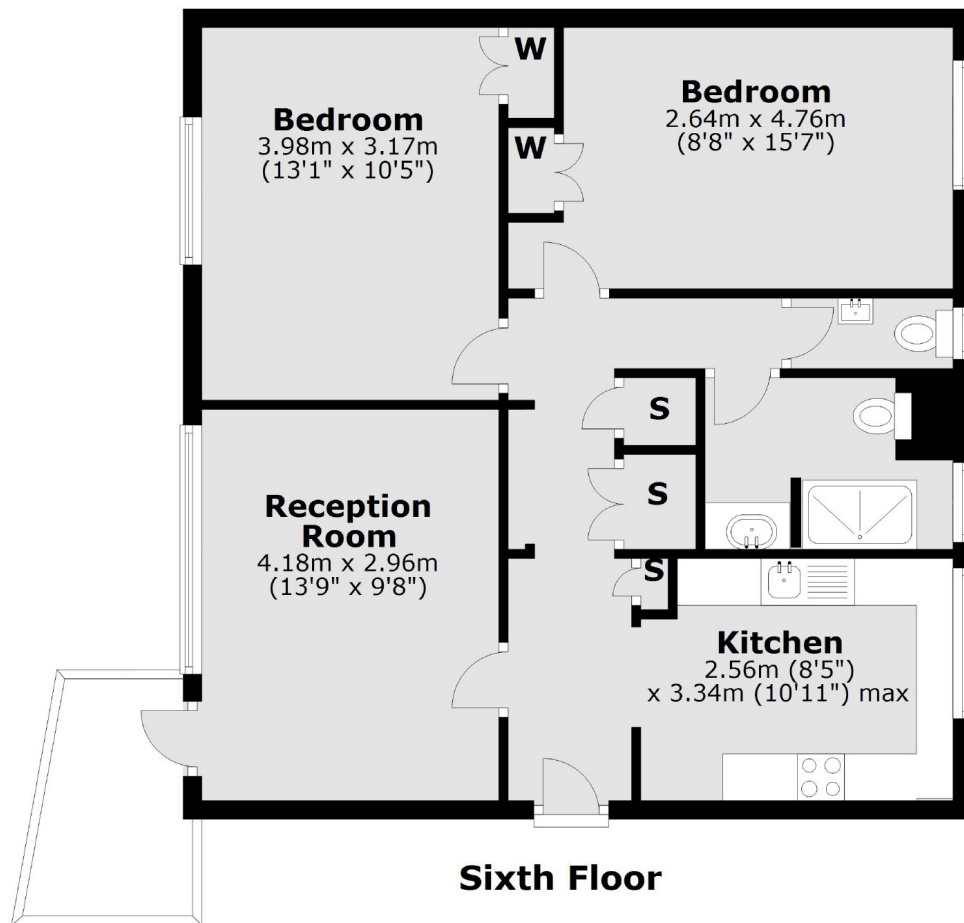
Westbourne Grove has a wide range of shops, restaurants and bars within its proximity including Sainsburys and Beach Blanket Babylon and is also convenient for the many local fresh fruit and veg stalls available on nearby Portobello Road.

Features

- Two Double Bedrooms
- Modern Kitchen
- Modern Bathroom
- Lift Access
- Bright
- Westbourne Grove



Portobello Court, London, W11



Total area: approx. 64.8 sq. metres (697.2 sq. feet)