



Linden Gardens, W2

£923 Per week

A spacious three bedroom house close to Notting Hill Gate. With wooden floors throughout, the property has space for dining, separate living room and a private balcony. Layout includes a modern kitchen with gas hob, a front facing reception and a downstairs WC.

The property is 0.1 miles from Notting Hill Gate tube station and walking distance to local amenities.

Features

- Three Bedroom House
- Private Balcony
- Wood Floors
- Two Receptions
- One Bathroom
- Separate W/C



Linden Gardens, W2

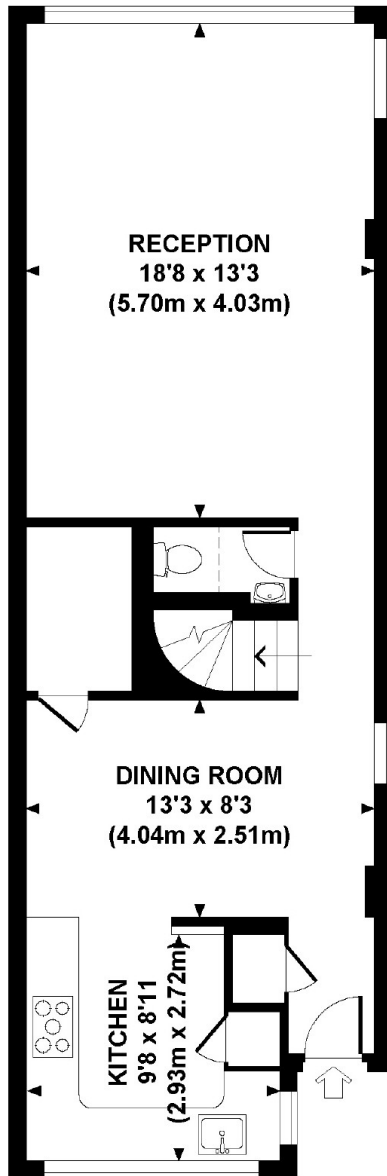
A spacious three bedroom house close to Notting Hill Gate. With wooden floors throughout, the property has space for dining, separate living room and a private balcony. Layout includes a modern kitchen with gas hob, a front facing reception and a downstairs WC.



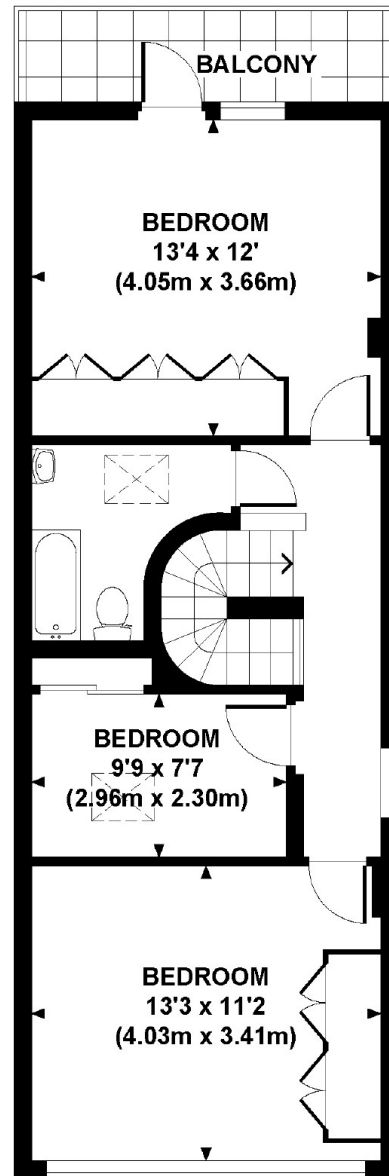
Linden Gardens, London, W2

THE LIMES, LINDEN GARDENS, W2

Approx. gross internal area
1080 Sq Ft. / 100.3 Sq M.
Representation of current layout
Not to scale.



GROUND FLOOR



FIRST FLOOR

Dexters

Notting Hill
121-123 Notting Hill Gate
London
W11 3LB
Lettings
020 7792 0792

Energy Rating: D. We aim to make our particulars both accurate and reliable. However they are not guaranteed; nor do they form part of an offer or contract. If you require clarification on any points then please contact us, especially if you're traveling some distance to view. Please note that appliances and heating systems have not been tested and therefore no warranties can be given as to their good working order.

 **RICS** | Regulated
Estate Agent
and Letting Agent

[dexters.co.uk](https://www.dexters.co.uk)