



## Woodsford Square, W14

£1,845 Per week

A superb five bedroom house located within the residential Woodsford Square, a secluded gated community in Holland Park. The property is presented in excellent order and offers 2,290 sq ft of bright, functional living space. There is a private garden to the rear and a garage at the front.

Woodsford Square is surrounded by exquisite communal gardens, and is situated just off the exclusive Addison Road. The apartment further benefits from the excellent transport and shopping facilities of both Holland Park Avenue and Kensington High Street.

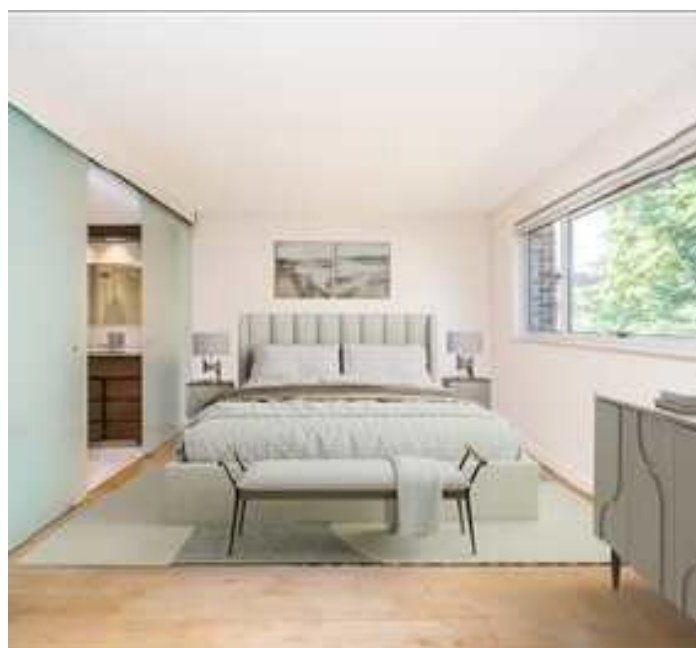
### Features

- Substantial House
- Five Bedrooms
- Four Bathrooms
- Woodsford Square W14
- Garage
- Rear Patio Garden
- Professionally Managed
- Holland Park
- Moments from Kensington

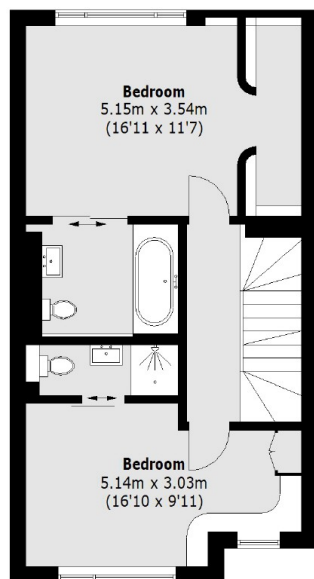


Woodsford Square, W14

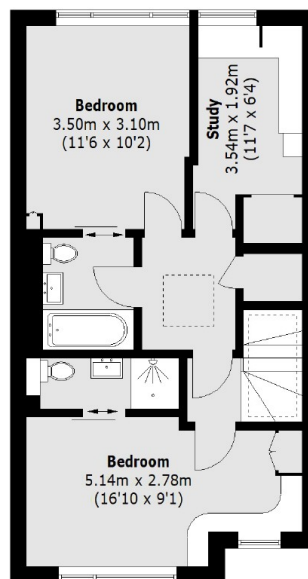




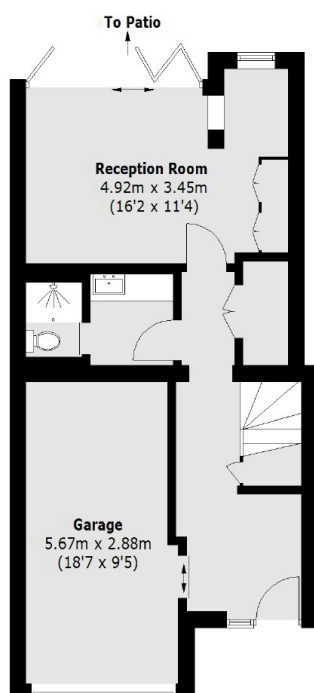
# Woodsford Square, London, W14



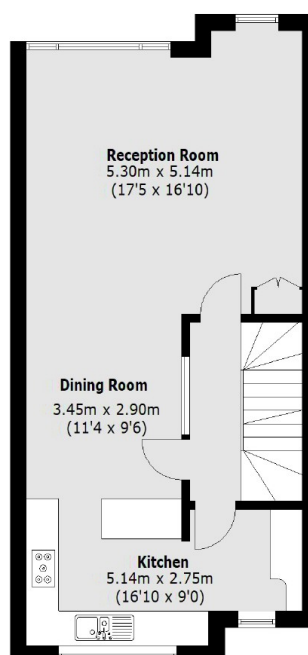
**Second Floor**



**Third Floor**



**Ground Floor**



**First Floor**

Total area (approx.): 212.8 sq. m (2,290.5 sq. ft)  
(Including Garage)

## Dexters

Notting Hill  
121-123 Notting Hill Gate  
London  
W11 3LB  
Lettings  
020 7792 0792

Energy Rating: . We aim to make our particulars both accurate and reliable. However they are not guaranteed; nor do they form part of an offer or contract. If you require clarification on any points then please contact us, especially if you're traveling some distance to view. Please note that appliances and heating systems have not been tested and therefore no warranties can be given as to their good working order.

**RICS** Regulated  
Estate Agent  
and Letting Agent

dexters.co.uk