



## Cornwall Crescent, W11

£403 Per week

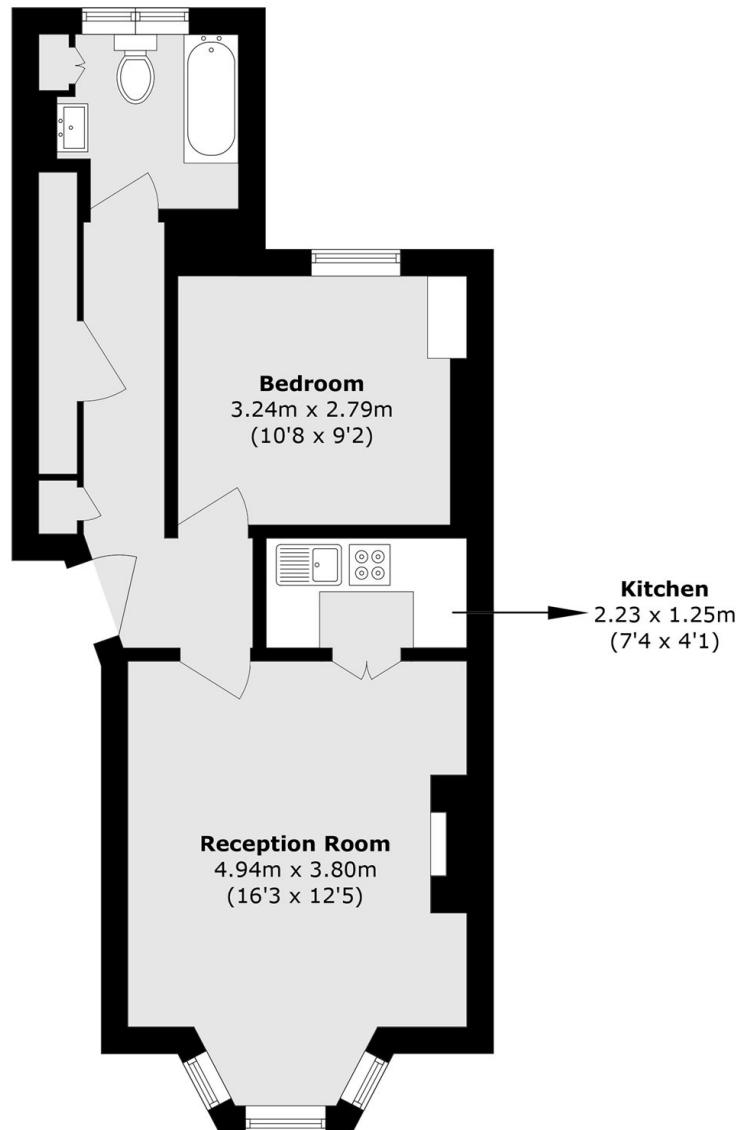
This well-maintained one-bedroom flat, situated on the raised ground floor, offers a spacious reception room and a separate, fully fitted kitchen. The bedroom features ample built-in storage, while the newly refurbished bathroom is finished to a high standard, providing a modern and comfortable living space throughout.

Ideally located within close proximity to Ladbroke Grove Underground Station, the property also benefits from easy access to the vibrant local amenities of Portobello Road and Notting Hill Gate.

### Features

- One Bedroom
- One Bathroom
- Prime Location
- Ample Storage
- High Ceilings
- Quiet Location
- Professionally Managed

# Cornwall Crescent, London, W11



Total area (approx.): 42.7 sq. m (459.6 sq. ft)