



Shrewsbury Mews, W2

£634 Per week

**Dexters**



## Shrewsbury Mews, W2

A beautifully presented two double bedroom mews house with a private garage, ideally situated within the gated Shrewsbury Mews right in the heart of Notting Hill. This charming home combines contemporary living with classic mews character, offering generous living space, secure parking, and a highly sought-after central location.

Shrewsbury Mews is ideally positioned just 0.3 miles from Westbourne Park and 0.6 miles from Ladbroke Grove Underground Stations, providing convenient access to the Circle and Hammersmith & City lines. The vibrant shops, cafés, and restaurants of Westbourne Grove are only a short three- to five-minute walk away, placing an array of amenities right on your doorstep.

### Features

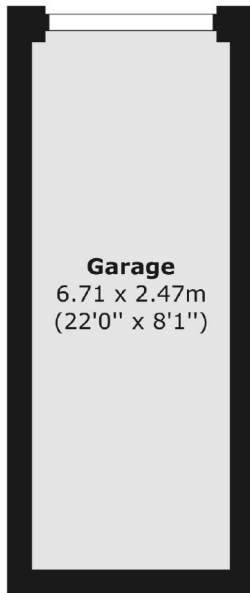
- Mews House
- Two Bedroom
- Own Entrance
- Gated Residential Mews
- Prime Notting Hill
- Professionally Managed



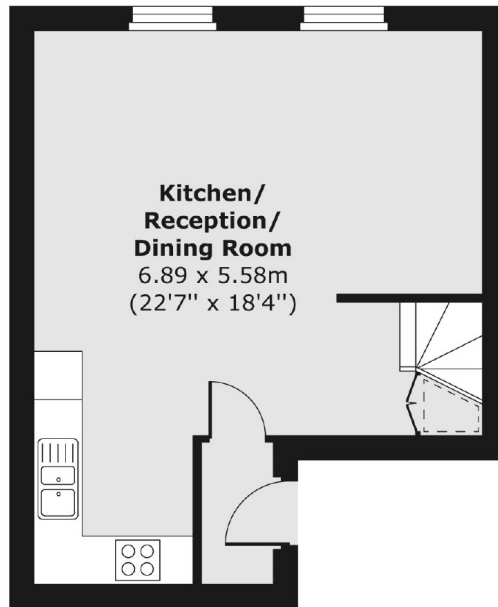


# Shrewsbury Mews, London, W2

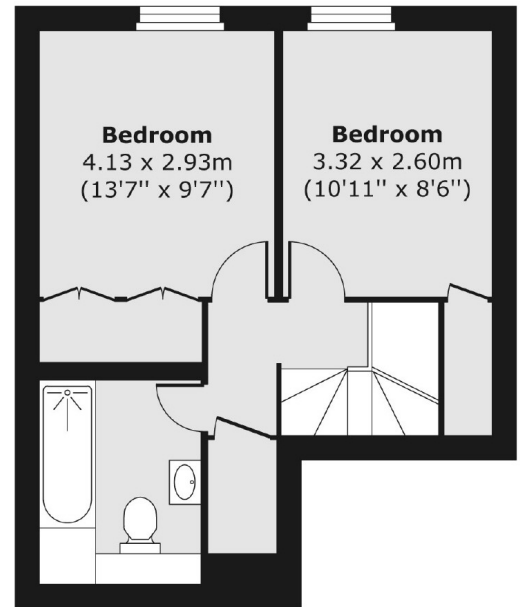
Ground Floor



First Floor



Second Floor



Total area (approx.) 67.21 sq. m (723 sq. ft)  
Garage area (approx.) 16.53 sq. m (178 sq. ft)