



## Norland Square, W11

£519 Per week

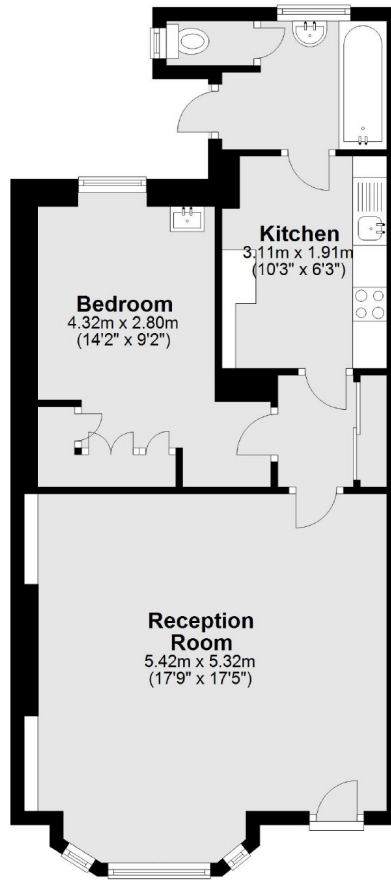
A spacious one bedroom property with its own entrance on Norland Square. This property has parquet flooring throughout the property, a separate galley style kitchen and ample storage. You also have exclusive access to the Norland Gardens and Tennis Courts.

The property is located on a popular garden square in Holland Park, a short distance away from all the shops and bars of both Holland Park Avenue and Notting Hill Gate.

### Features

- One Bedroom
- Own Entrance
- Parquet Flooring
- Communal Gardens
- Ample Storage

# Norland Square, London, W11



Total area: approx. 56.8 sq. metres (611.4 sq. feet)

## Dexters

Notting Hill  
121-123 Notting Hill Gate  
London  
W11 3LB  
Lettings  
020 7792 0792

Energy Rating: . We aim to make our particulars both accurate and reliable. However they are not guaranteed; nor do they form part of an offer or contract. If you require clarification on any points then please contact us, especially if you're traveling some distance to view. Please note that appliances and heating systems have not been tested and therefore no warranties can be given as to their good working order.

 **RICS** | Regulated  
Estate Agent  
and Letting Agent

[dexters.co.uk](http://dexters.co.uk)