



Lonsdale Road, W11

£3,462 Per week

Dexters



Lonsdale Road, W11

An immaculate, newly refurbished four-bedroom home arranged over five stylish floors, showcasing modern finishes, elegant wood flooring, and a roof terrace perfectly positioned in the heart of Notting Hill.

Lonsdale Road is primely located for access to the restaurants and shops of Westbourne Grove and the open spaces of Hyde Park. Great transportation links from Westbourne Park (Circle, Hammersmith and City lines) and Notting Hill Gate (Central, Circle, and District lines) are both 0.4 miles away. Additionally, the royal green spaces of Holland Park and Kensington Gardens are a short walk.

Features

- Four Double Bedrooms
- Three Bathrooms
- Private Roof terrace
- Underfloor heating in bathrooms
- Close proximity to Westbourne

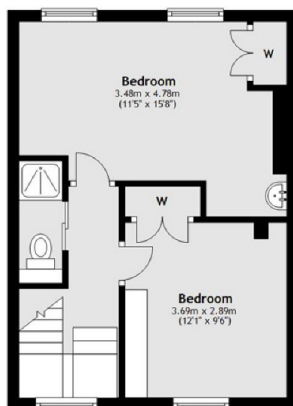




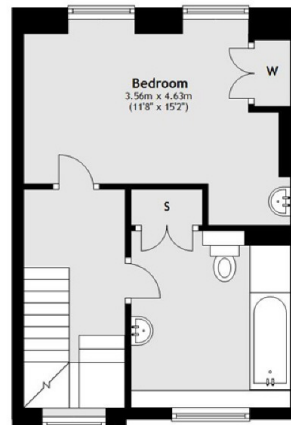


Lonsdale Road, London, W11

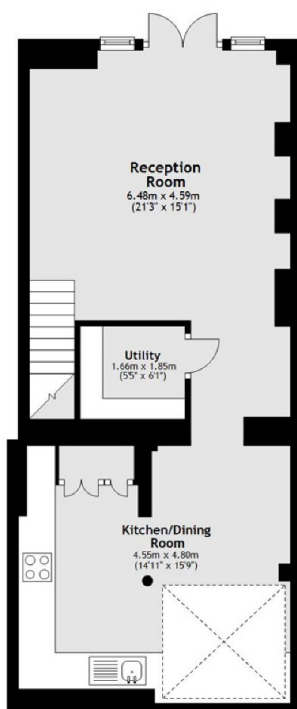
Third Floor



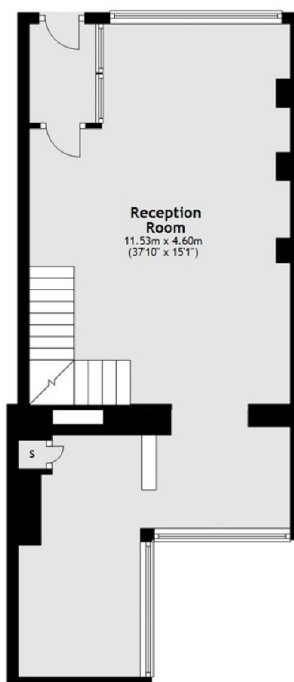
Second Floor



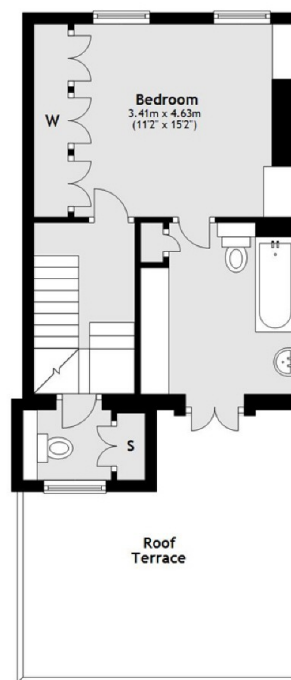
Lower Ground Floor



Raised Ground Floor



First Floor



Total area: approx. 197.7 sq. metres (2127.7 sq. feet)

Dexters

Notting Hill
121-123 Notting Hill Gate
London
W11 3LB
Lettings
020 7792 0792

Energy Rating: . We aim to make our particulars both accurate and reliable. However they are not guaranteed; nor do they form part of an offer or contract. If you require clarification on any points then please contact us, especially if you're traveling some distance to view. Please note that appliances and heating systems have not been tested and therefore no warranties can be given as to their good working order.

RICS Regulated
Estate Agent
and Letting Agent

dexters.co.uk