



Portobello Court, W11

£785 Per week

A large and bright three double bedroom apartment situated on the second floor of a well maintained purpose built block with wood flooring and plenty of storage ideally located within the heart of Notting Hill.

The property is ideally situated on the corner of Westbourne Grove and Portobello Road, within a short distance of Notting Hill Gate and Ladbroke Grove stations.

Features

- Three Double Bedrooms
- Balcony
- Wood Flooring
- Second Floor Flat
- Plenty Of Storage
- Separate Kitchen
- Overlooking Portobello Road
- Heart of Notting Hill
- Professionally Managed

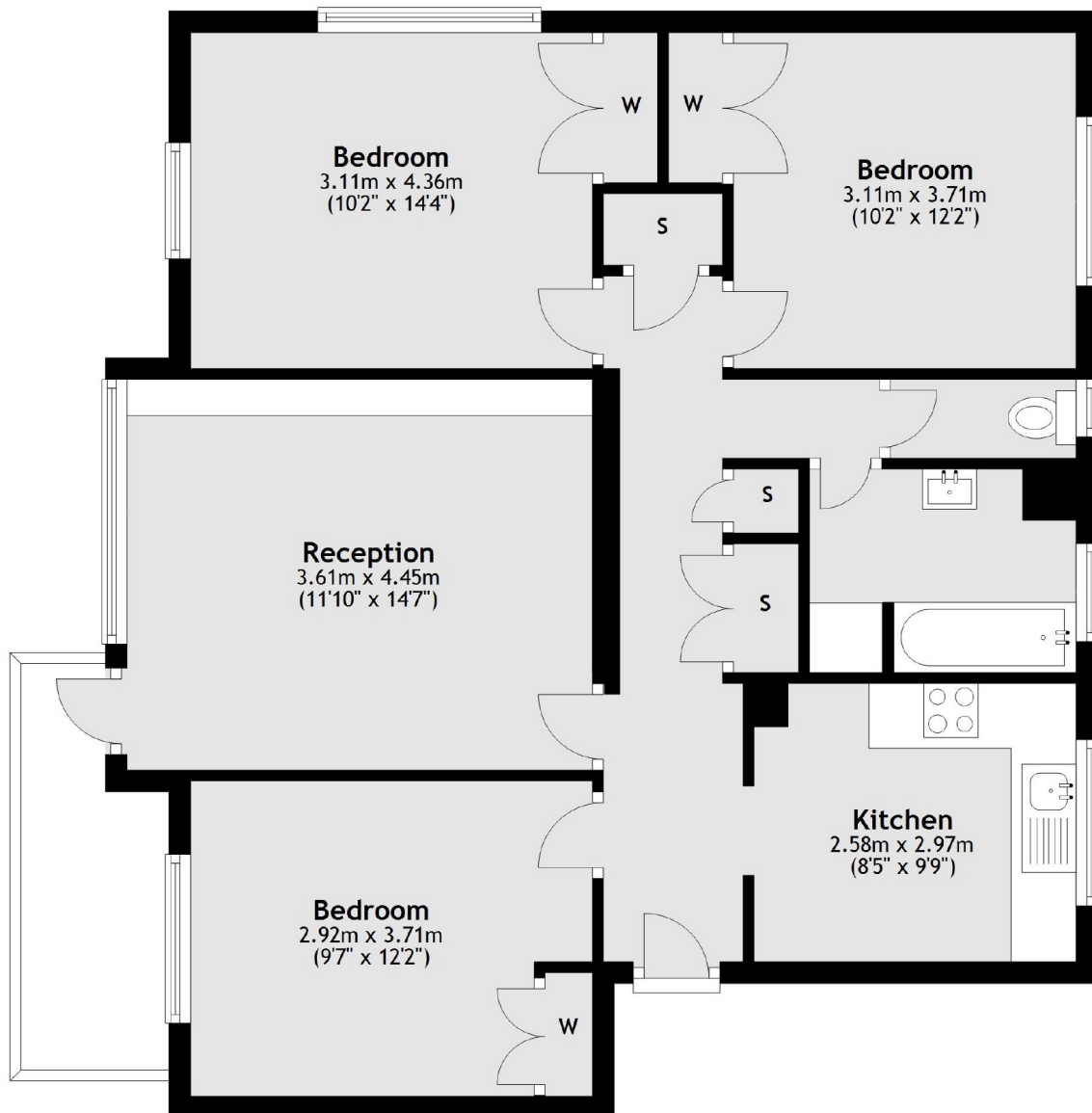


Portobello Court, W11



Portobello Court, London, W11

Second Floor



Main area: Approx. 77.0 sq. metres (829.1 sq. feet)
Plus balconies, approx. 4.9 sq. metres (52.5 sq. feet)

Dexters

Notting Hill
121-123 Notting Hill Gate
London
W11 3LB
Lettings
020 7792 0792

Energy Rating: . We aim to make our particulars both accurate and reliable. However they are not guaranteed; nor do they form part of an offer or contract. If you require clarification on any points then please contact us, especially if you're traveling some distance to view. Please note that appliances and heating systems have not been tested and therefore no warranties can be given as to their good working order.

 **RICS** | Regulated
Estate Agent
and Letting Agent

dexters.co.uk