



## Kelfield Mews, W10

£576 Per week

This spacious and delightful one double bedroom mews house is set over two floors, the first floor has a large bright west facing open plan living room and a large double bedroom with good storage. Ground floor has a tiled bathroom with shower over the bath and direct access to a large private paved garden.

Kelfield Mews is a quiet mews convenient for the wide array of fresh fruit and veg stalls available on nearby Portobello Road, there is also a Virgin Active health club nearby on Lancaster Road and the nearest underground is Ladbroke Grove (Hammersmith and City line).

### Features

- Wood floors
- Open plan kitchen
- One double bedroom
- Two floors
- Private paved garden
- Ladbroke Grove Underground

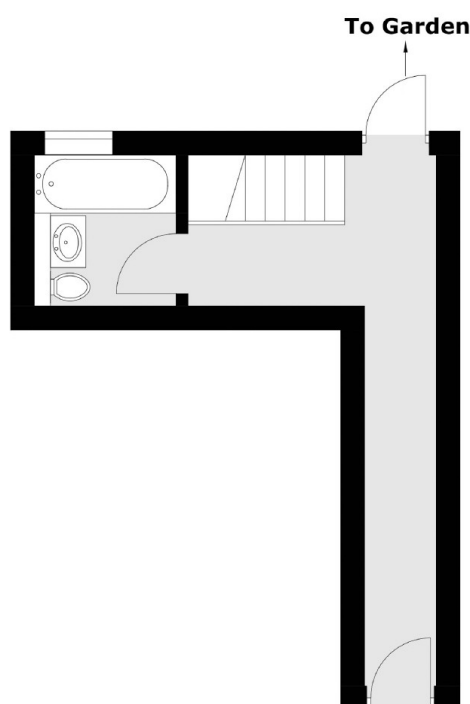


**Kelfield Mews, W10**

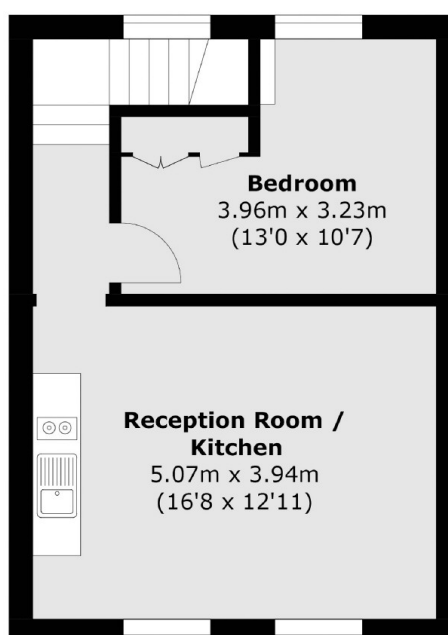




# Kelfield Mews, London, W10



**Ground Floor**



**First Floor**

Total area Total area (approx.): 51.1 sq.m (550.1 sq. ft)