



## Elgin Crescent, W11

£1,275 Per week

Quietly positioned on the third floor of a mansion block, this is a bright, lateral two-bedroom two-bathroom apartment offers expansive open plan living and access to Elgin Crescent's garden square.

The building is very well position on Elgin Crescent, close to the wide array of shops bars and restaurants available on Westbourne Grove and beyond. Ladbroke Grove and Holland Park Station are your closest stations offering (Central, Hammersmith and City and Circle Lines).

### Features

- Two Double Bedrooms
- Two Bathrooms
- Garden Square Access
- Separate washer and dryer
- Lateral Apartment
- Over 1,000sq ft

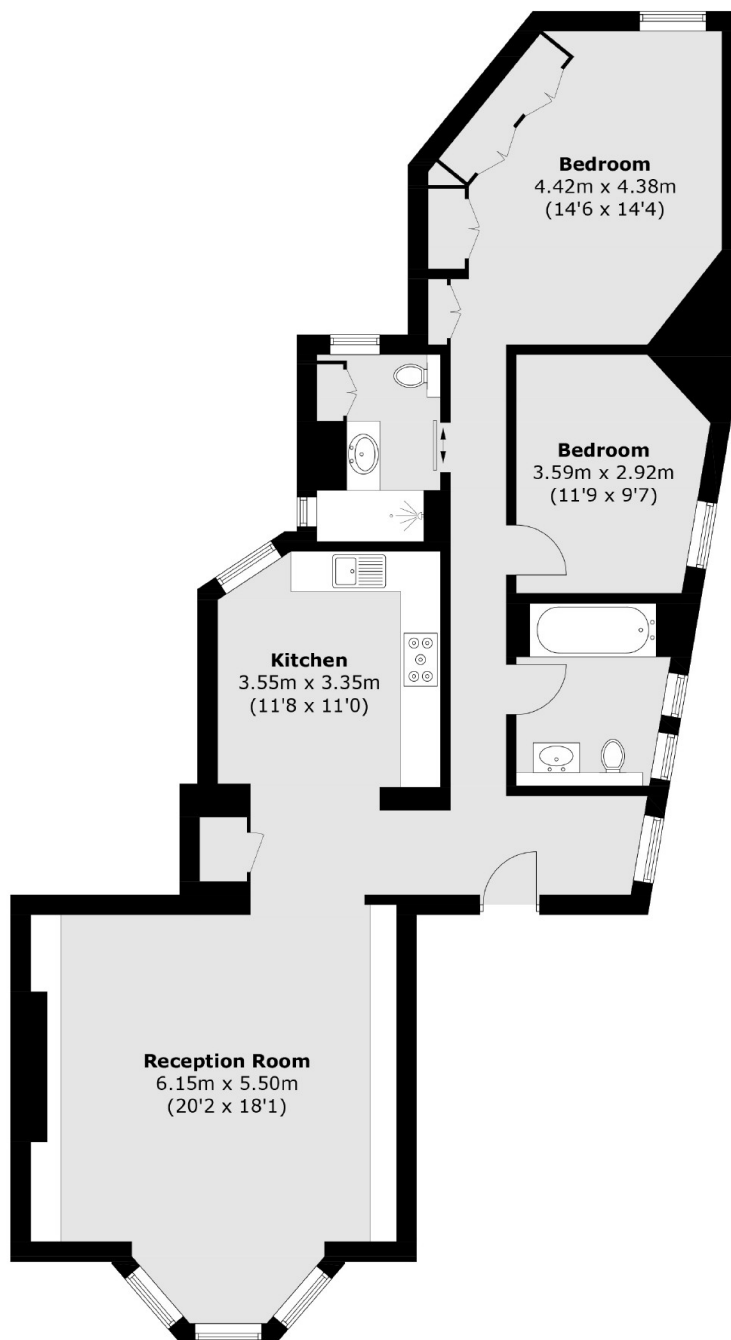


**Elgin Crescent, W11**





# Elgin Crescent, London, W11



## Second Floor

Total area (approx.): 100.5 sq. m (1,081.8 sq. ft)

# Dexters

Notting Hill  
121-123 Notting Hill Gate  
London  
W11 3LB  
Lettings  
020 7792 0792

Energy Rating: . We aim to make our particulars both accurate and reliable. However they are not guaranteed; nor do they form part of an offer or contract. If you require clarification on any points then please contact us, especially if you're traveling some distance to view. Please note that appliances and heating systems have not been tested and therefore no warranties can be given as to their good working order.

 **RICS** | Regulated  
Estate Agent  
and Letting Agent

[dexters.co.uk](https://www.dexters.co.uk)