



Kensington Gardens Square, W2

£807 Per week

Dexters



Kensington Gardens Square, W2

A luxury and contemporary one double bedroom apartment situated on the ground floor with a terrace in this prestigious development. Ideally located on Kensington Gardens Square, just off Westbourne Grove in Notting Hill

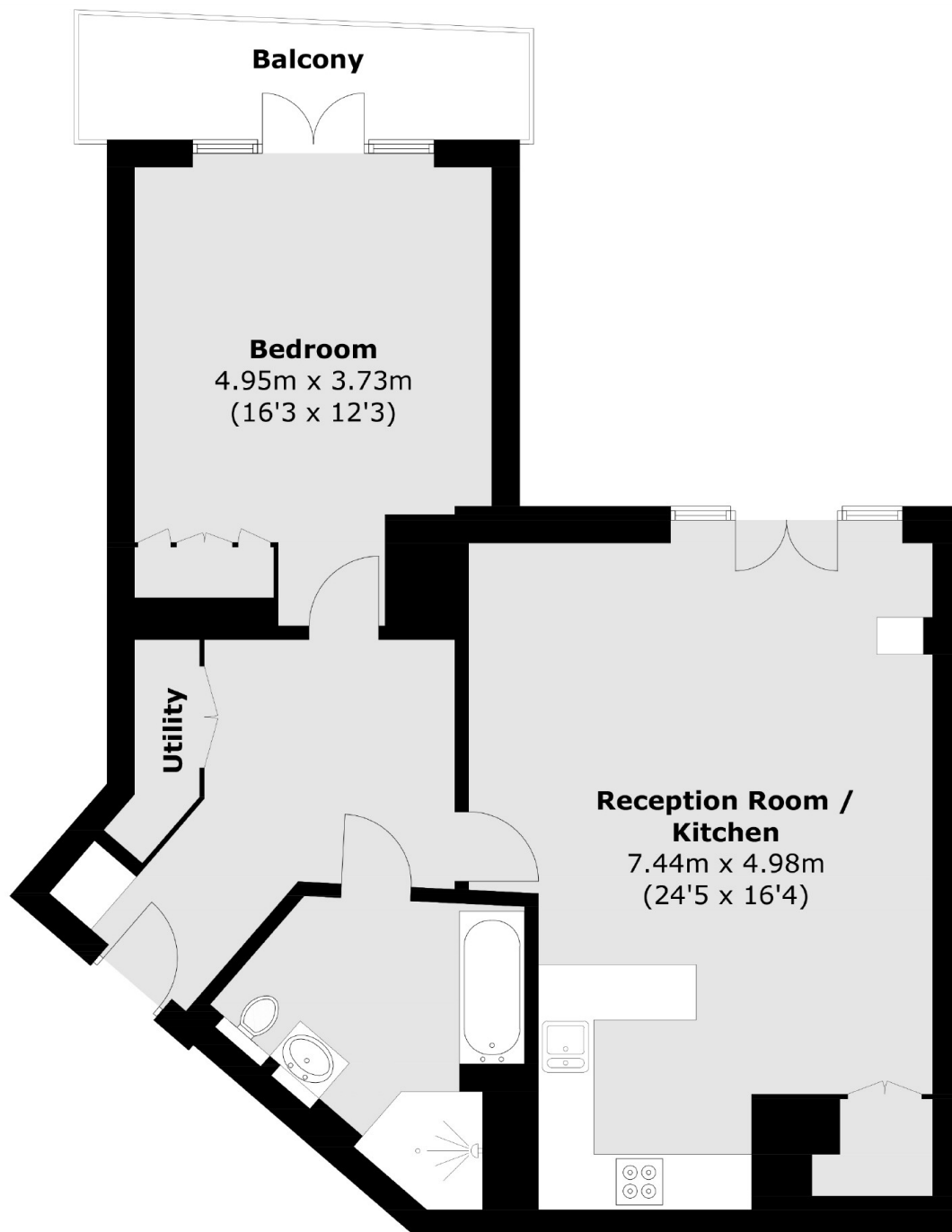
Kensington Garden Square is conveniently located a few steps from the local shops and boutiques of Notting Hill. Bayswater Tube Station is 0.2 miles from the property whilst Queensway is 0.3 miles and Notting Hill Gate is 0.7 miles.

Features

- One Double Bedroom
- Open Plan
- 24 Hour Porter
- Terrace
- Modern Apartment



Kensington Gardens Square, London, W2



Total area (approx.): 75.0 sq. m (807.3 sq. ft)
Balcony area : 6.1 sq. m (65.6 sq. ft)

Dexters

Notting Hill
121-123 Notting Hill Gate
London
W11 3LB
Lettings
020 7792 0792

Energy Rating: . We aim to make our particulars both accurate and reliable. However they are not guaranteed; nor do they form part of an offer or contract. If you require clarification on any points then please contact us, especially if you're traveling some distance to view. Please note that appliances and heating systems have not been tested and therefore no warranties can be given as to their good working order.

 **RICS** | Regulated
Estate Agent
and Letting Agent

[dexters.co.uk](https://www.dexters.co.uk)