



**Hippodrome Mews, W11**

**£1,038** Per week

**Dexters**



# Hippodrome Mews, W11

This beautiful three bedroom mews house located in Holland Park is arranged over three floors, with a large separate kitchen diner, two bathrooms and a private terrace off the living room.

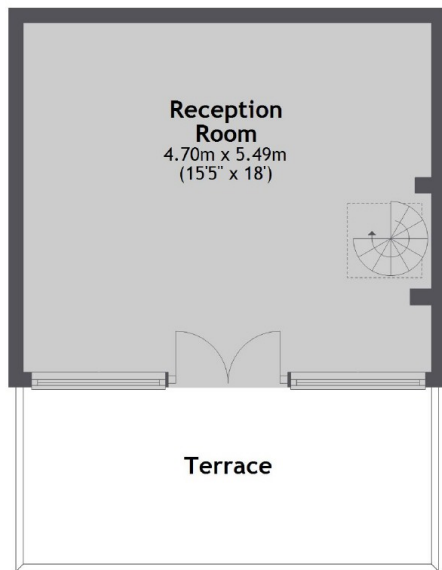
Hippodrome Mews is ideally situated in the centre of Notting Hill, close to all amenities of Ladbroke Grove and Notting Hill, while Holland Park Station is only 0.5 miles away.

## Features

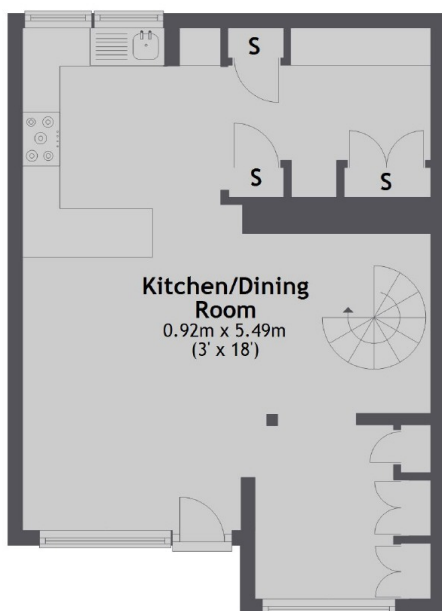
- Three Bedrooms
- Mews House
- Two Bathrooms
- Private Terrace
- Plenty Of Storage
- Wood Flooring



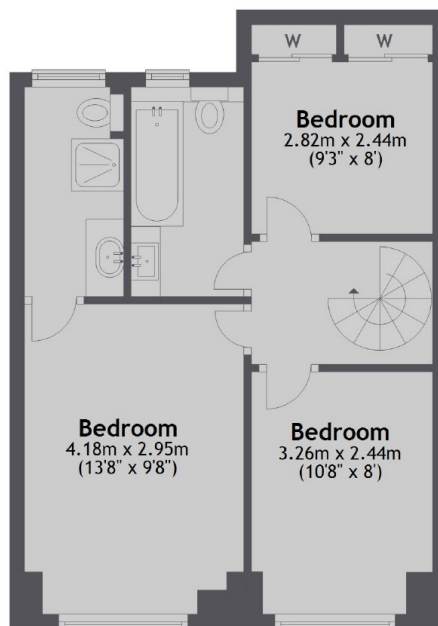
# Hippodrome Mews, London, W11



Second Floor



Ground Floor



First Floor

Total area: approx. 106.0 sq. metres (1141.4 sq. feet)

## Dexters

Notting Hill  
121-123 Notting Hill Gate  
London  
W11 3LB  
Lettings  
020 7792 0792

Energy Rating: C. We aim to make our particulars both accurate and reliable. However they are not guaranteed; nor do they form part of an offer or contract. If you require clarification on any points then please contact us, especially if you're traveling some distance to view. Please note that appliances and heating systems have not been tested and therefore no warranties can be given as to their good working order.

 **RICS** | Regulated  
Estate Agent  
and Letting Agent

[dexters.co.uk](https://www.dexters.co.uk)