



Westbourne Grove, W11

£576 Per week

A well presented one bedroom flat benefitting from high ceilings and wood flooring with a semi open plan kitchen reception and in the heart of Notting Hill.

Ideally located in the heart of Westbourne Grove offering access to all of the shops and amenities including Jusu Brothers, Granger & Co and Farmacy.

Features

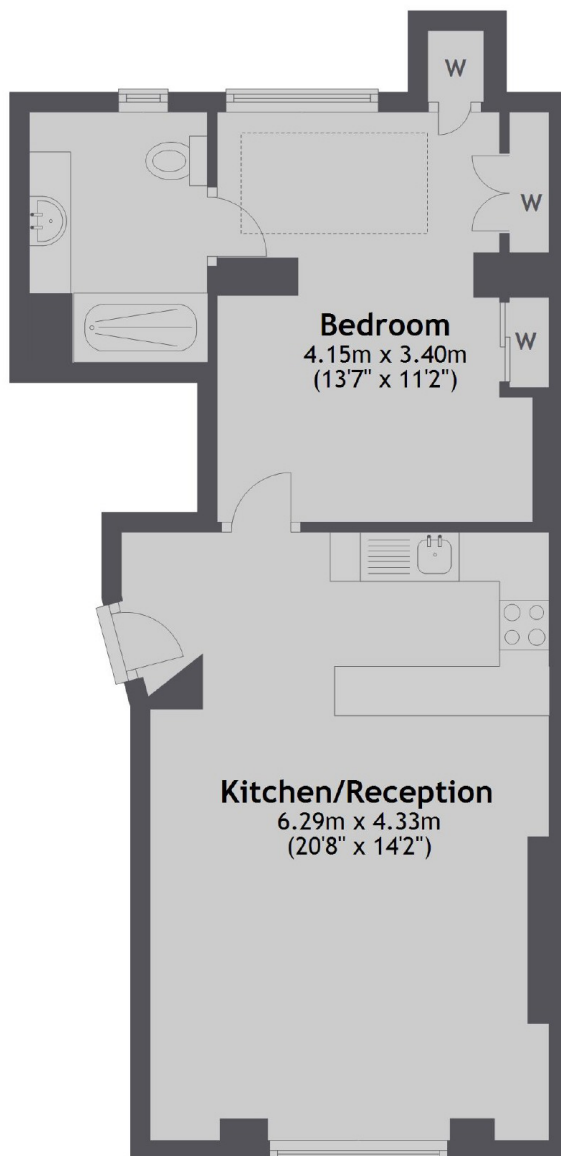
- One Double Bedroom
- Wood Flooring
- High Ceilings
- Open Plan Layout
- Additional Utility Room
- Modern Finish



Westbourne Grove, W11



Westbourne Grove, London, W11



Total area: approx. 44.8 sq. metres (482.6 sq. feet)