



Colville Gardens, W11

£900 Per week

A charming two double bedroom duplex apartment occupying the top two floors of this well maintained period conversion, offering wood floors throughout, vast living space, two bathrooms, impressive natural light and a private roof terrace.

The property is situated in the centre of Notting Hill, close to all the local amenities of both Westbourne Grove and Portobello Road, while Ladbroke Grove station is only 0.4 miles away.

Features

- Wood Flooring
- Two Double Bedrooms
- Prime Notting Hill
- Split Level
- High Ceilings
- Private Roof Terrace

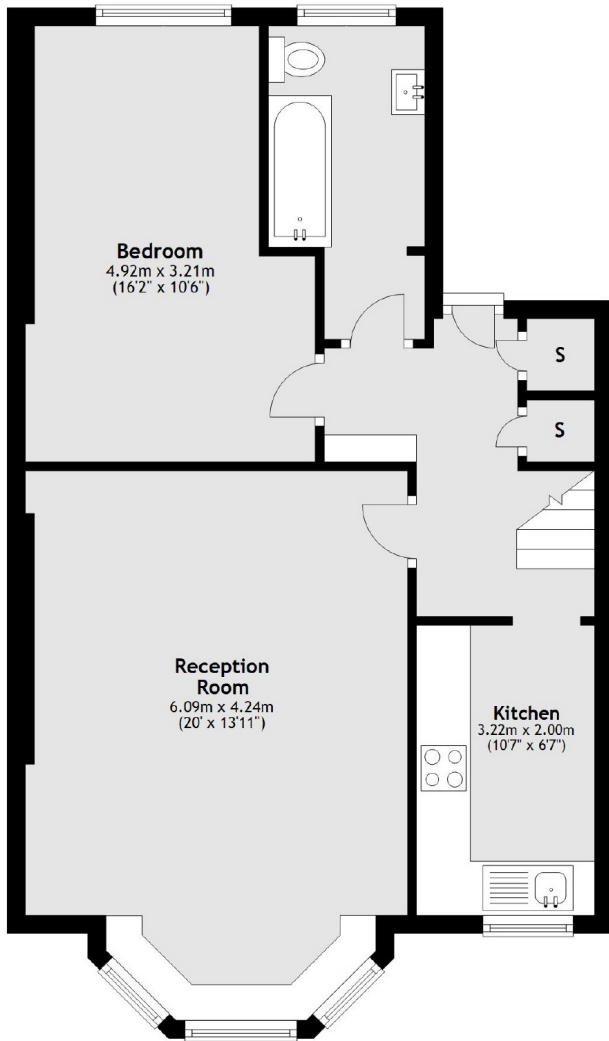


Colville Gardens, W11

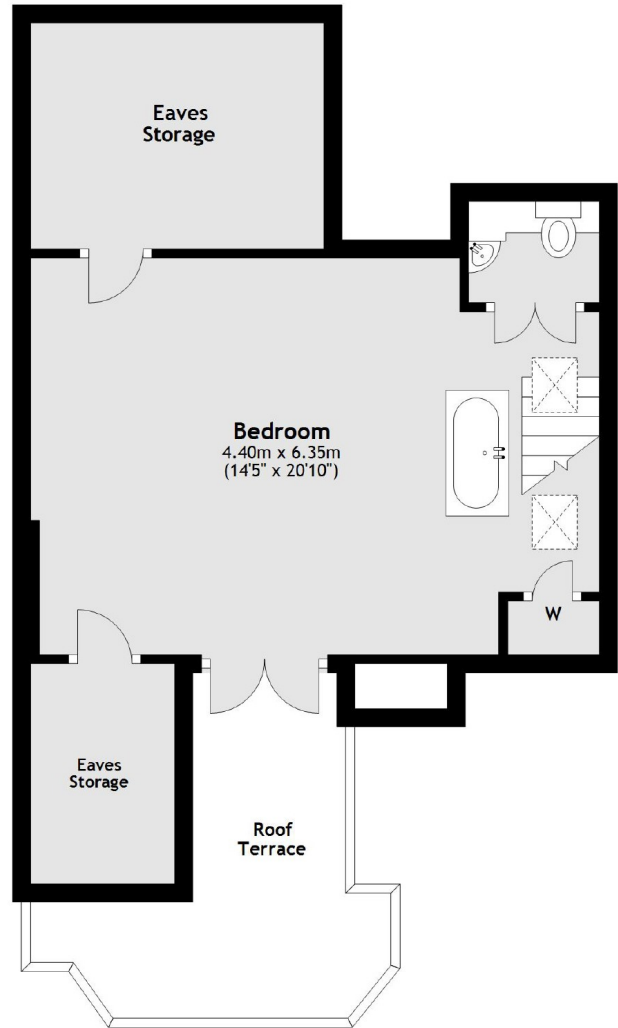


Colville Gardens, London, W11

Fourth Floor



Fifth Floor



Main area: Approx. 88.3 sq. metres (950.6 sq. feet)
Plus roof terrace, approx. 9.5 sq. metres (102.7 sq. feet)