



Elgin Crescent, W11

£692 Per week

A spacious and bright two double bedroom flat set within a well maintained mansion building located on the residential Elgin Crescent with wood flooring a large separate kitchen and access to communal gardens.

Convenient for the many local shops, bars and cafes of both Notting Hill Gate and Westbourne Grove and a short walk from Portobello Market.

Features

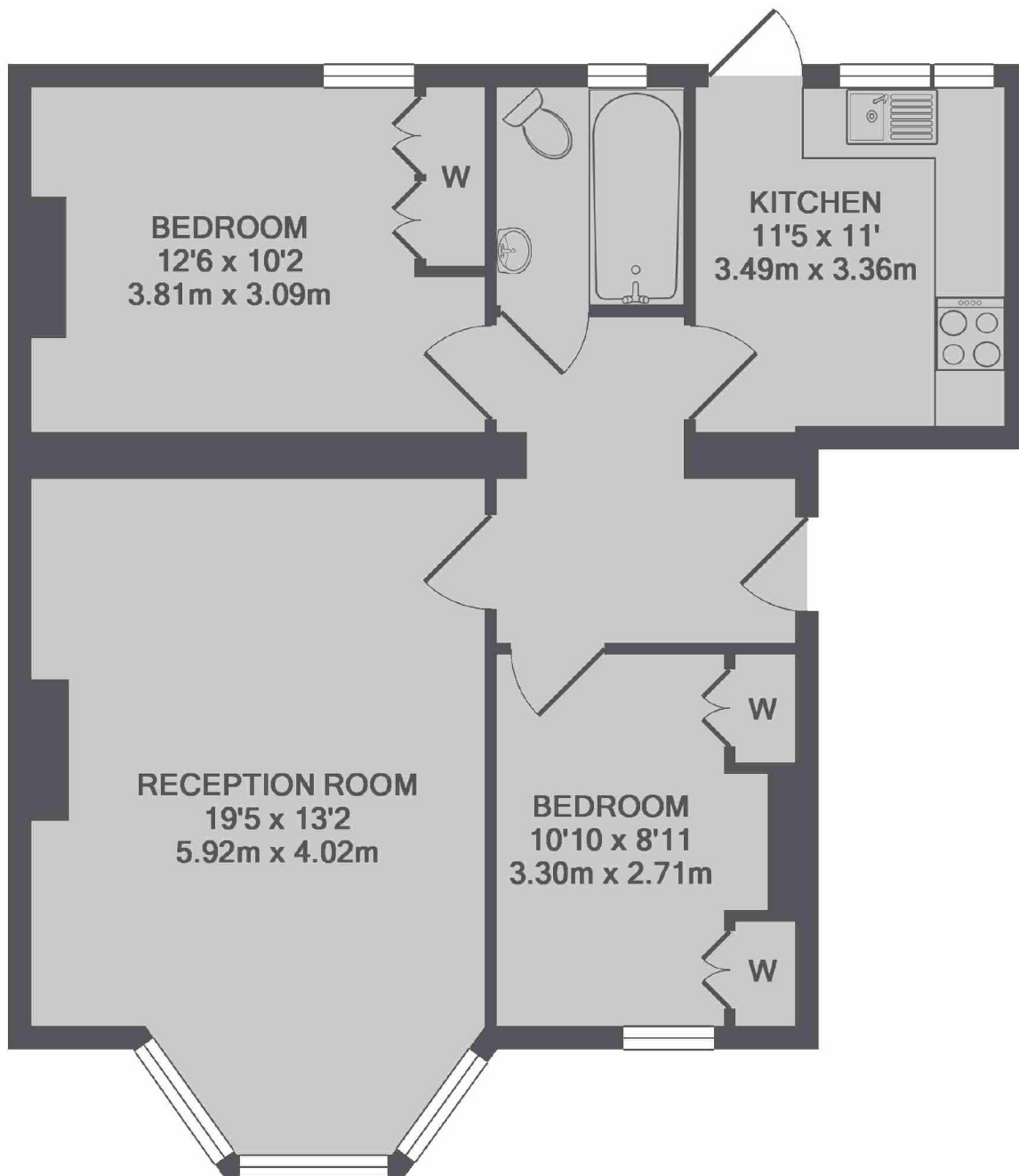
- Two Double Bedrooms
- High Ceilings
- Separate eat in Kitchen
- Communal Gardens
- Recently Refurbished
- Plenty Of Storage
- Professionally Managed



Elgin Crescent, W11



Elgin Crescent, London, W11



TOTAL APPROX. FLOOR AREA 680 SQ.FT. (63.1 SQ.M.)
Made with Metropix ©2017

Dexters

Notting Hill
121-123 Notting Hill Gate
London
W11 3LB
Lettings
020 7792 0792

Energy Rating: E. We aim to make our particulars both accurate and reliable. However they are not guaranteed; nor do they form part of an offer or contract. If you require clarification on any points then please contact us, especially if you're traveling some distance to view. Please note that appliances and heating systems have not been tested and therefore no warranties can be given as to their good working order.

 **RICS** | Regulated
Estate Agent
and Letting Agent

dexters.co.uk