



Leinster Square, W2

£2,769 Per week

Dexters



Leinster Square, W2

An Impeccably presented three-bedroom garden flat overlooking a private residents' garden square. Behind the grand stucco frontage with tall, west-facing arched windows, this meticulously restored building is in new condition. Split over two floors, it features three bedrooms, three bathrooms, two reception rooms, and private west-facing gardens, offering luxurious living with elegant charm.

The building was recently completed to a high specification to include comfort cooling, open plan designer kitchens with integrated appliances, oak parquet flooring to living areas and carpets to bedrooms.

Westbourne Grove is a prestigious area in Notting Hill, known for its luxury boutiques, fine dining, and elegant cafes. It offers excellent transport links, with nearby tube stations providing easy access to central London. Close to Kensington Gardens, it combines sophisticated urban living with natural beauty.

Features

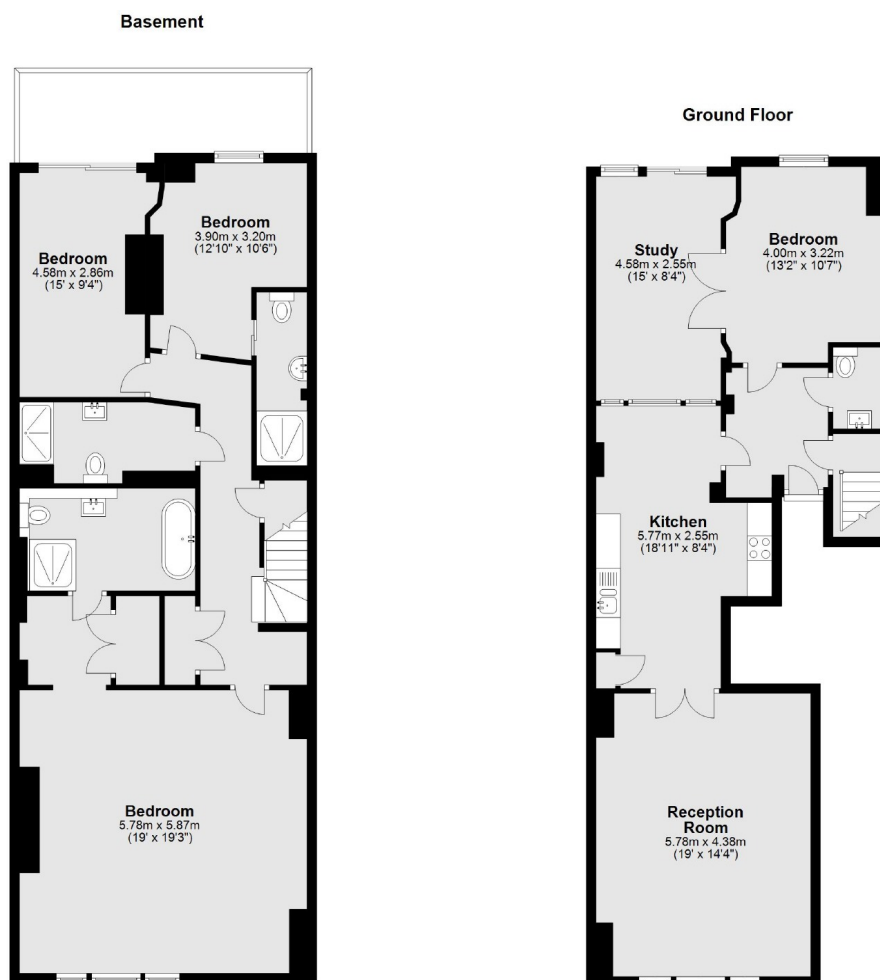
- Meticulous Restoration
- Three Bedroom Apartment
- Two Bathrooms
- Private Garden
- Additional Dining Room
- Raised Ground Floor







Leinster Square, London, W2



Total area: approx. 173.6 sq. metres (1868.2 sq. feet)