



Kensington Gardens Square, W2

£995 Per week

Dexters



Kensington Gardens Square, W2

A modern two bedroom, two bathroom apartment situated on the fourth floor of this popular portered development on Kensington Gardens Square. The property benefits from access to the building's health facilities which include a swimming pool gym and golfing simulator. There is step free access to the property, too.

Kensington Garden Square is conveniently located a few steps from the local shops and boutiques of Notting Hill. Bayswater Tube Station is 0.2 miles from the property whilst Queensway is 0.3 miles and Notting Hill Gate is 0.7 miles.

Features

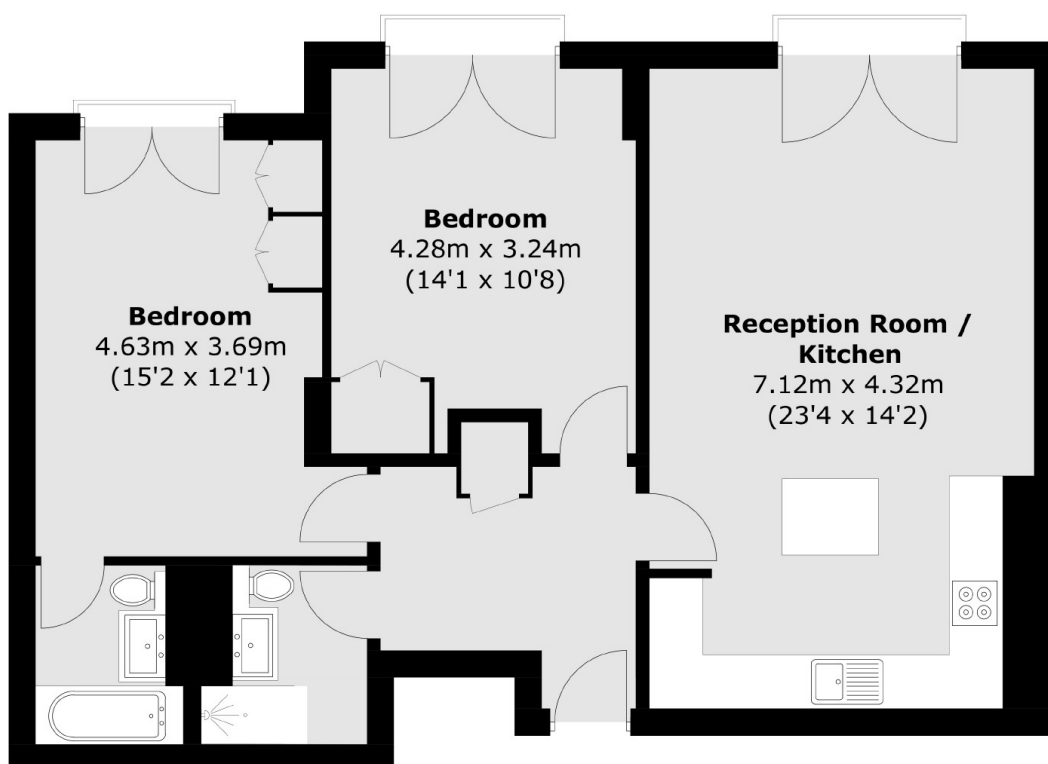
- Two Double Bedrooms
- Two Bathrooms
- Furnished or Unfurnished
- Lift Access
- Leisure Facilities
- Newly refurbished







Kensington Gardens Square, London, W2



Total area (approx.): 77.4 sq. m (833.1 sq. ft)