



Linden Gardens, W2

£496 Per week

Dexters



Linden Gardens, W2

This charming top-floor one-bedroom flat features wooden flooring throughout. The bright, open-plan living area is perfect for relaxation and entertaining, while the separate modern kitchen offers ample storage and appliances. The spacious bedroom serves as a peaceful retreat, and the stylish bathroom adds a contemporary touch. With lovely views and a convenient location, this flat is ideal for comfortable living.

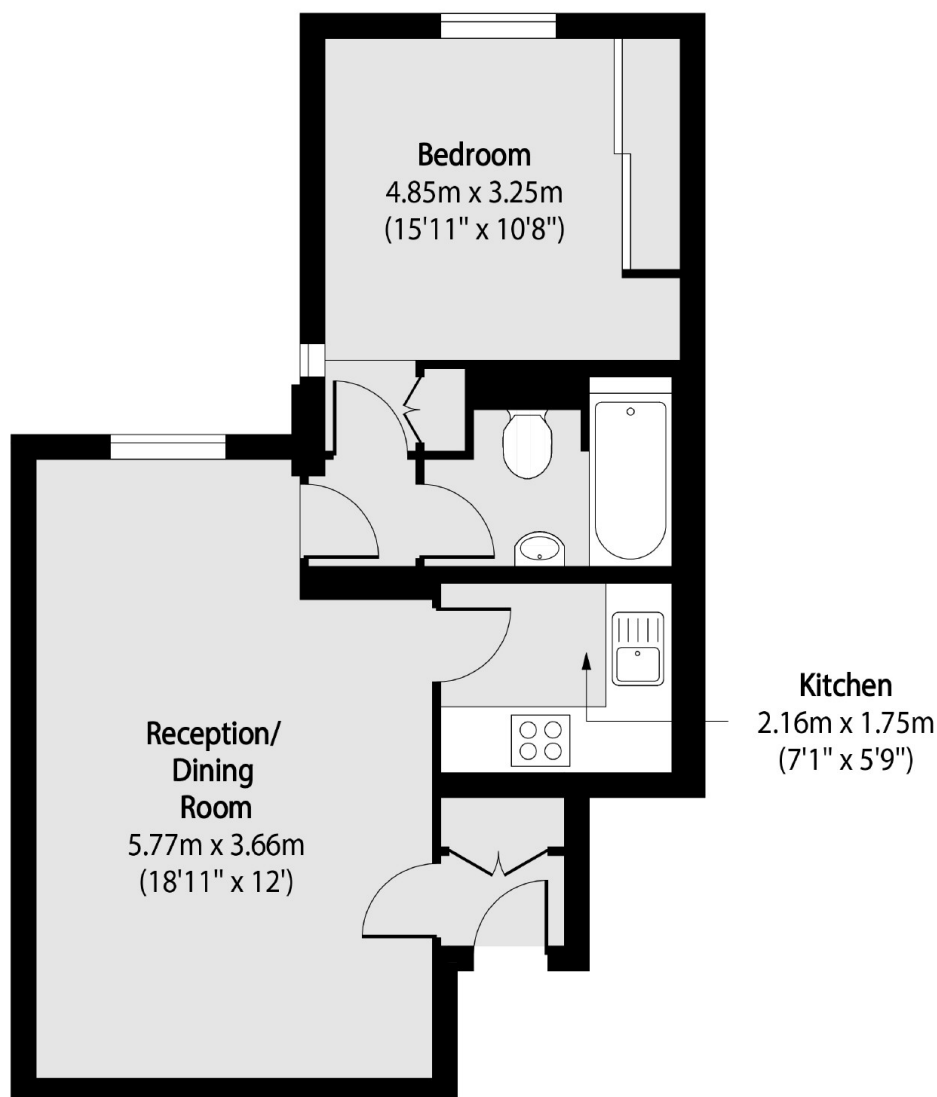
Linden Gardens is a quiet residential cul de sac just off Notting Hill Gate. The world famous Portobello Road is nearby, as is Hyde Park and Notting Hill Gate Station.

Features

- One double bedroom
- One bathroom
- Wood floors
- Separate kitchen
- Top floor
- Cul de sac



Linden Gardens, London, W2



Total area (approx): 41.90 sq m (451 sq. ft)