



## Holland Park Mews, W11

£800 Per week

A spacious three double bedroom mews house, neutrally decorated throughout with an open plan reception room, dining and modern kitchen area with wooden flooring throughout.

Located for all of the shops, restaurants bars and amenities of Notting Hill and Holland Park. This is truly in a desirable location. The garage is not included.

### Features

- Three Double Bedroom
- Spacious Property
- Mews House
- Balcony
- Wood Floors
- Close to Holland Park



## Holland Park Mews, London, W11

The property is neutrally decorated throughout and comprises of a master suite with balcony, second double bedroom, single bedroom or study, contemporary bathroom, spacious open plan reception room, dining and modern kitchen area with wooden flooring throughout.

The property is located five minutes walk from Holland Park Underground station with excellent transport links to town and the city. Perfect for a couple or young family looking for some extra space and a central location.

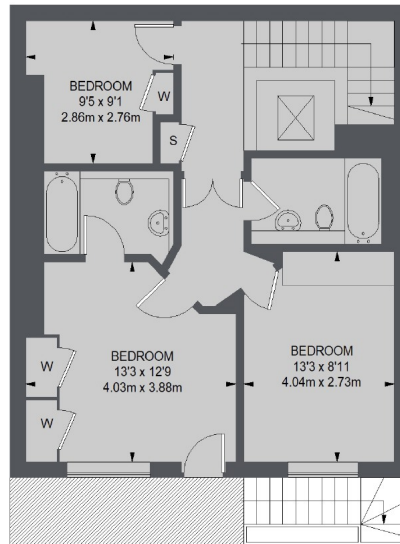
Located for all of the shops and amenities of Notting Hill and Holland Park. Such as Tesco's, Marks and Spencers, Pizza Express.



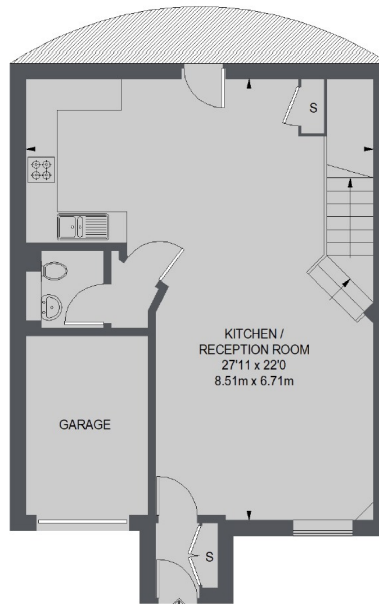




## Holland Park Mews, London, W11



FIRST FLOOR



GROUND FLOOR

TOTAL APPROX. FLOOR AREA (EXCLUDING GARAGE)  
1185 SQ. FT. (110.12 SQ. M.)

### Contact

To arrange a viewing call our office on the number below or visit our website.



Energy Rating: F. We aim to make our particulars both accurate and reliable. However they are not guaranteed; nor do they form part of an offer or contract. If you require clarification on any points then please contact us, especially if you're traveling some distance to view. Please note that appliances and heating systems have not been tested and therefore no warranties can be given as to their good working order.