



Leinster Square, W2

£1,578 Per week

Dexters



Leinster Square, W2

This impeccably refurbished two-bedroom first-floor flat overlooks a private residents' garden square. Behind the grand stucco frontage with tall, west-facing arched windows, this meticulously restored building is in brand new condition. Arranged over one floor, it features two bedrooms, two bathrooms, an open plan kitchen/reception room, and a large private terrace overlooking the gardens, offering luxurious living with elegant charm.

The building was recently completed to a high specification to include comfort cooling, open plan designer kitchens with integrated appliances, oak parquet flooring to living areas and carpets to bedrooms.

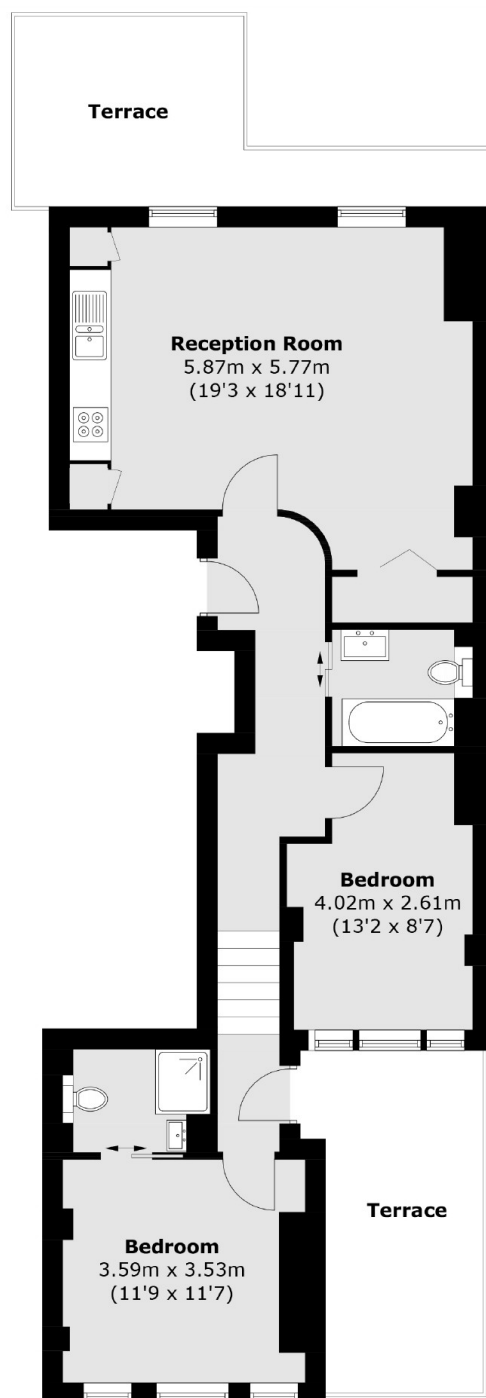
Westbourne Grove is a prestigious area in Notting Hill, known for its luxury boutiques, fine dining, and elegant cafes. It offers excellent transport links, with nearby tube stations providing easy access to central London. Close to Kensington Gardens, it combines sophisticated urban living with natural beauty.

Features

- Meticulous Restoration
- Brand New
- Two Bathrooms
- Private Balcony
- First Floor
- Underground Heating



Leinster Square, London, W2



Total area (approx.): 68.4 sq. m (736.5 sq. ft)
Terrace: 24.2 sq. m (260.5 sq. ft)

Dexters

Notting Hill
121-123 Notting Hill Gate
London
W11 3LB
Lettings
020 7792 0792

Energy Rating: . We aim to make our particulars both accurate and reliable. However they are not guaranteed; nor do they form part of an offer or contract. If you require clarification on any points then please contact us, especially if you're traveling some distance to view. Please note that appliances and heating systems have not been tested and therefore no warranties can be given as to their good working order.

 **RICS** | Regulated
Estate Agent
and Letting Agent

dexters.co.uk