



Ladbroke Grove, W10

£634 Per week

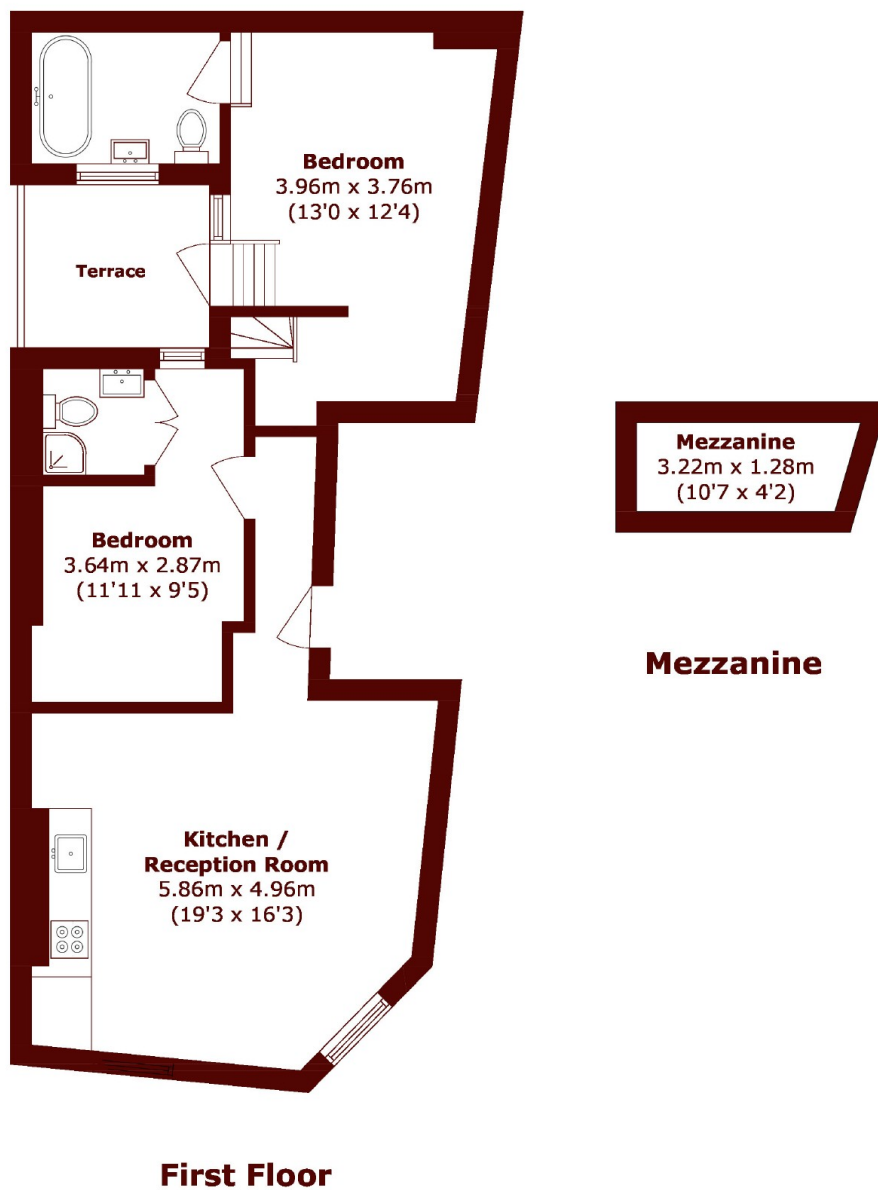
A large two double bedroom first floor apartment that offers high ceilings, a triple aspect reception room with an open plan kitchen two bathrooms and a separate dining space.

Situated on the corner of Lancaster Road and Ladbroke Grove, close to Portobello Road and Westbourne Grove. The closest tube station is Ladbroke Grove.

Features

- Two Bedroom
- First Floor
- High Ceilings
- Dual Aspect
- Additional Mezzanine
- Two Bathrooms
- Ladbroke Grove Station

Ladbroke Grove, London, W10



Total area (approx.): 74.8 sq. m (805.1 sq. ft)

Terrace area (approx.): 6.2 sq. m (66.7 sq. ft)