



Kensington Gardens Square, W2

£1,100 Per week

Dexters



Kensington Gardens Square, W2

A modern and contemporary two double bedroom apartment situated on the second floor of this luxurious new development located on Kensington Garden Square offering secure underground parking and a porter.

The apartment further benefits include modern oak wood flooring throughout, comfort cooling, two double bedrooms complete with built in storage, two bathrooms and a large open plan living space including a modern kitchen complete with Miele appliances.

Kensington Garden Square is conveniently located a few steps from the local shops and boutiques of Notting Hill. Bayswater Tube Station is 0.2 miles from the property whilst Queensway is 0.3 miles and Notting Hill Gate is 0.7 miles.

Features

- Modern two bedroom apartment
- 24 hour porter
- Underground parking
- Two bathrooms
- Wood flooring

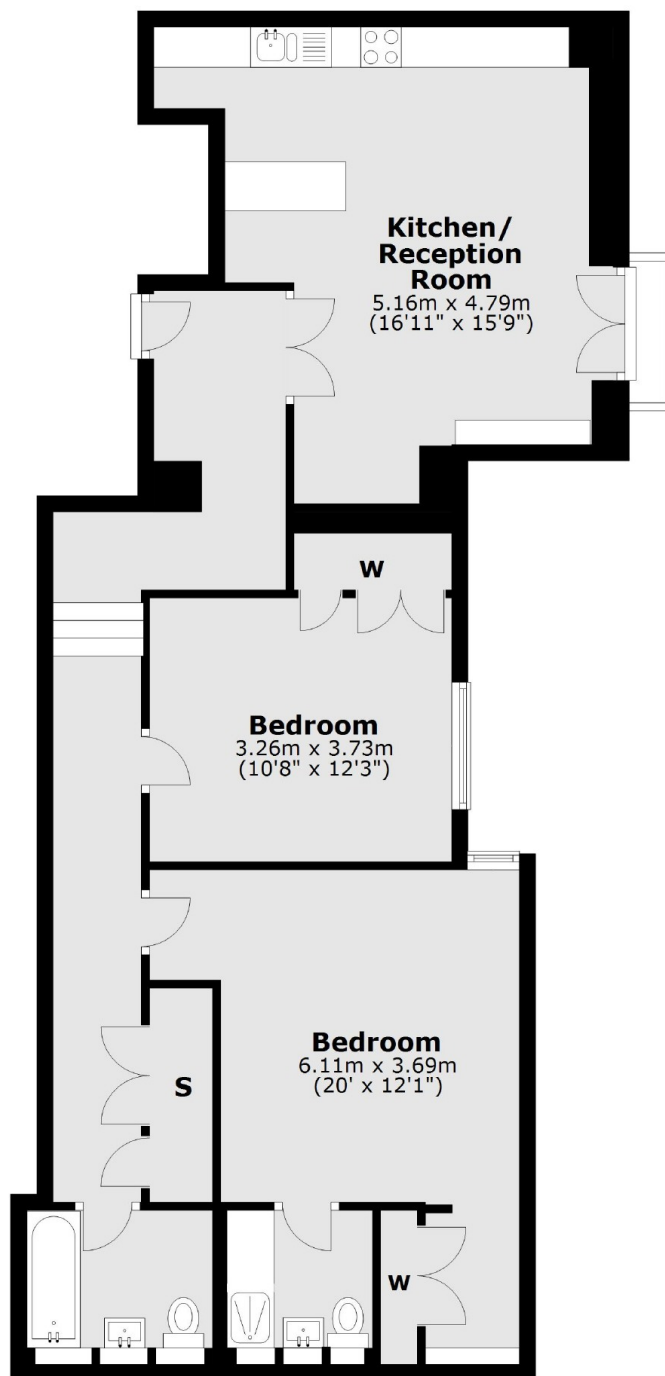






Kensington Gardens Square, London, W2

Second Floor



Total area: approx. 87.1 sq. metres (937.2 sq. feet)

Dexters

Notting Hill
121-123 Notting Hill Gate
London
W11 3LB
Lettings
020 7792 0792

Energy Rating: . We aim to make our particulars both accurate and reliable. However they are not guaranteed; nor do they form part of an offer or contract. If you require clarification on any points then please contact us, especially if you're traveling some distance to view. Please note that appliances and heating systems have not been tested and therefore no warranties can be given as to their good working order.

 **RICS** | Regulated
Estate Agent
and Letting Agent

dexters.co.uk