



Palace Court, W2

£691 Per week

A spacious two double bedroom apartment located in a prestigious red brick period building in the highly desirable Palace Court. The flat has a large reception room with room to dine, a separate eat-in kitchen with integrated appliances and two well proportioned bedrooms

Palace Court is one of Bayswater's finest streets. Perfectly located close to Notting Hill Gate, Westbourne Grove and Queensway with their popular shops, bars and restaurants. Kensington Gardens are also moments away and has excellent transport links nearby.

Features

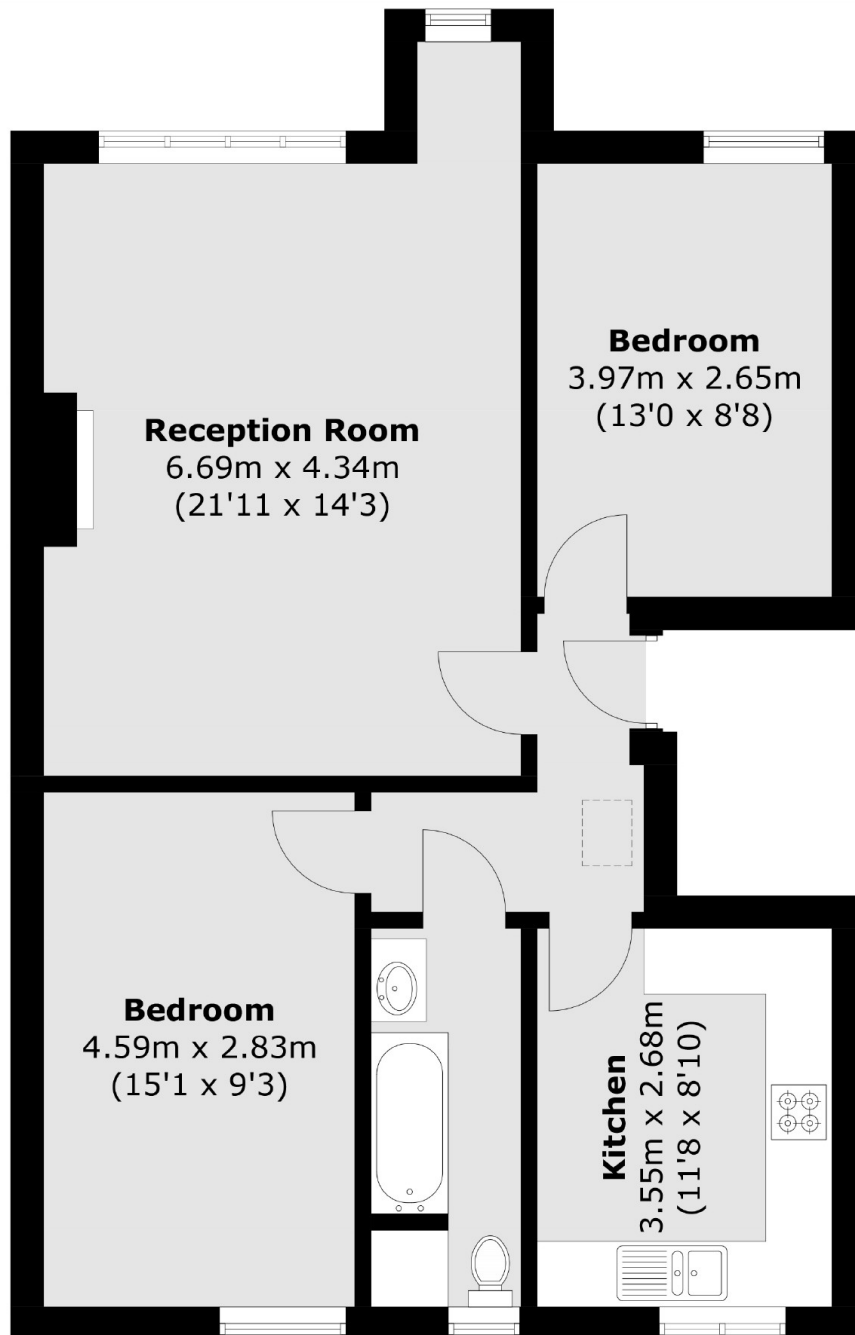
- Two Double Bedrooms
- Separate Kitchen
- Red Brick Mansion
- Notting Hill Gate
- Kensington Gardens
- Close To Amenities



Palace Court, W2



Palace Court,
London, W2



Total area (approx.): 70.5 sq. m (758.8 sq. ft)

Dexters

Notting Hill
121-123 Notting Hill Gate
London
W11 3LB
Lettings
020 7792 0792

Energy Rating: D. We aim to make our particulars both accurate and reliable. However they are not guaranteed; nor do they form part of an offer or contract. If you require clarification on any points then please contact us, especially if you're traveling some distance to view. Please note that appliances and heating systems have not been tested and therefore no warranties can be given as to their good working order.

 **RICS** | Regulated
Estate Agent
and Letting Agent

[dexters.co.uk](https://www.dexters.co.uk)