



Brewster Gardens, W10

£415 Per week

This recently refurbished two bedroom apartment is situated on the ground floor of a well maintained purposed built block, with wood flooring throughout and a separate kitchen.

Coronation Court is located on Brewster Gardens, it is a short walk away from the local amenities including a post office and local restaurants and cafes.

Features

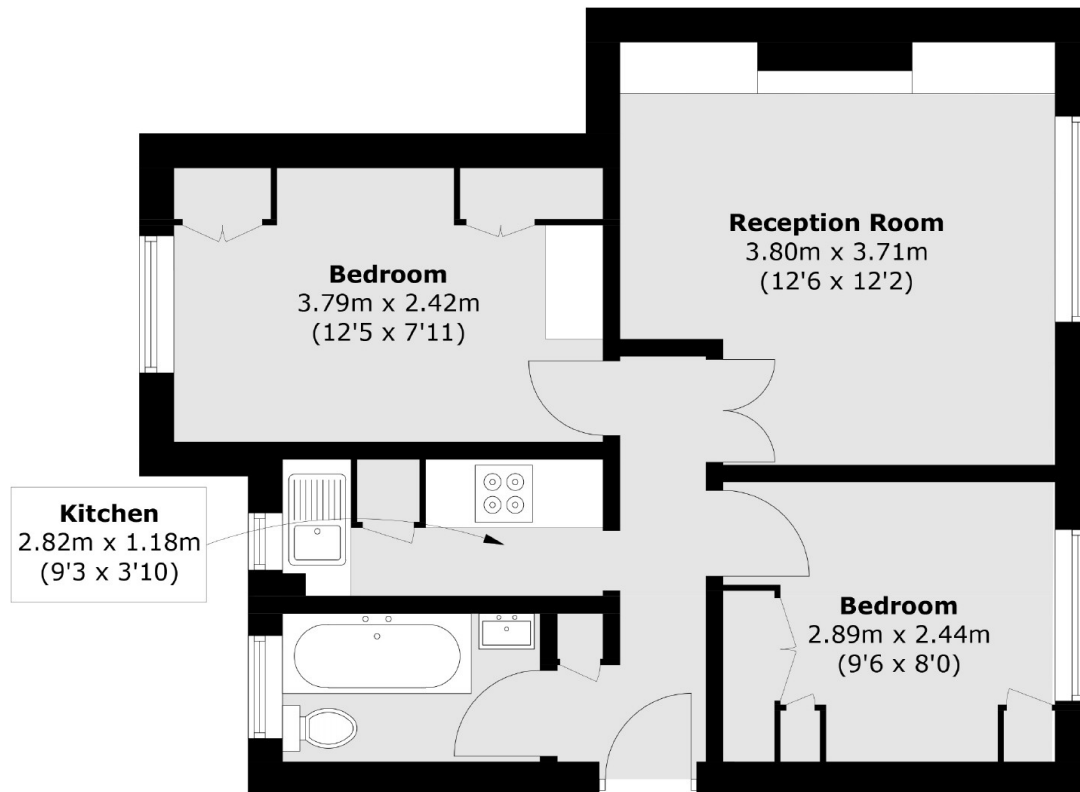
- Two Double Bedrooms
- Modern Bathroom
- Separate Kitchen
- Wooden Flooring
- Built In Storage
- Ground Floor



Brewster Gardens, W10



Brewster Gardens, London, W10



Total area (approx.): 41.6 sq. m (447.7 sq. ft)