



Burdett Mews, W2

£1,615 Per week

Dexters



Burdett Mews, W2

A substantial, end of terrace four bedroom mews house with dual access from both Westbourne Gardens to the North via an automatic gate opening to a private driveway (two cars) and Hatherley Grove via another secured gate.

The house has large double glazed windows on all floors as well as Juliette balconies to the first and second floors. The garden and driveway have also been re-landscaped.

Upon entering the property on the ground floor you are welcomed by a large entrance hall leading to a generous reception room, open-plan kitchen, separate dining area, double bedroom and shower room. The first floor offers two double bedrooms and two bathrooms (one en suite) whilst the principle also benefits from a walk-in wardrobe.

Burdett Mews is a quiet gated mews moments from the popular bars, boutique shops and brasseries on Westbourne Grove. The property is situated nearby a selection of stations including; Paddington, Royal Oak, and Bayswater Station, ideal for commutes into the West End and City.

Features

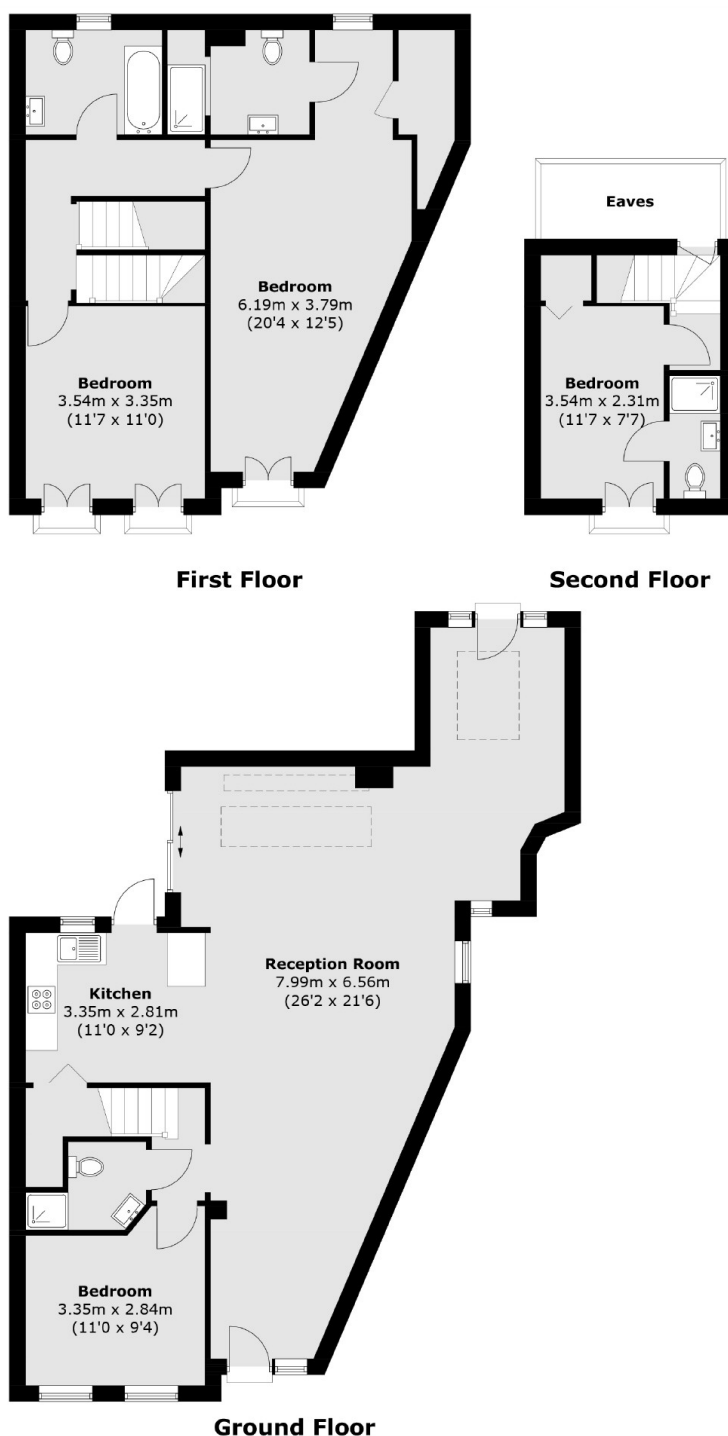
- Four Bedrooms
- Four Bathrooms
- Private Gardens & Driveway
- Secure Gated Entrances
- Newly Renovated
- Dual Access







Burdett Mews, London, W2



Total area (approx.): 155.7 sq. m (1,675.4 sq. ft)

Dexters

Notting Hill
121-123 Notting Hill Gate
London
W11 3LB
Lettings
020 7792 0792

Energy Rating: . We aim to make our particulars both accurate and reliable. However they are not guaranteed; nor do they form part of an offer or contract. If you require clarification on any points then please contact us, especially if you're traveling some distance to view. Please note that appliances and heating systems have not been tested and therefore no warranties can be given as to their good working order.

 **RICS** | Regulated
Estate Agent
and Letting Agent

[dexters.co.uk](https://www.dexters.co.uk)