

Golborne Road, W10

£403 Per week

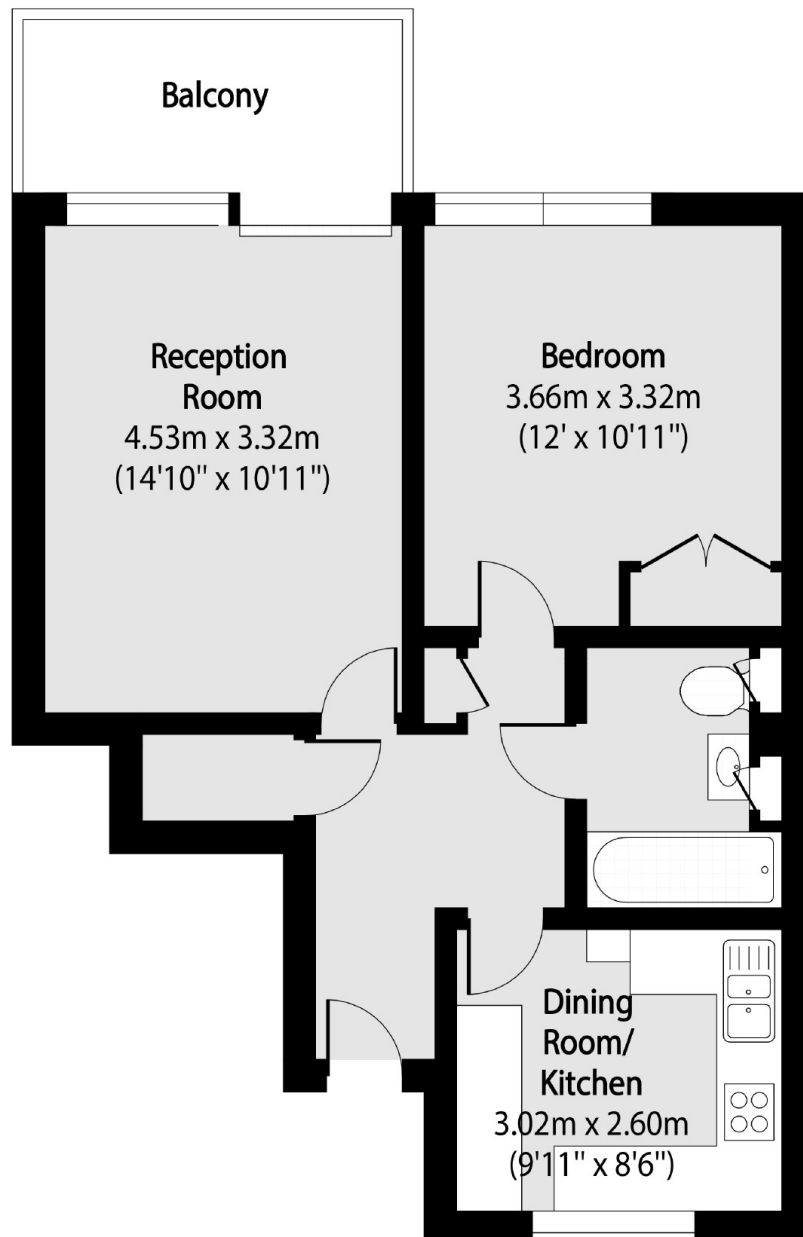
A spacious and repainted one double bedroom flat to let on the 27th floor of the iconic Grade II listed Trellick Tower with panoramic views across north and south London,

Located north end of Golborne Road and Portobello Road with its fashionable markets, restaurants, shops, and the famous West Thirty Six on Ladbroke Grove.

Features

- Spacious One Bedroom
- Wooden Floors
- Heating & hot water inc
- Private Balcony
- 24hour Concierge
- Views across London

Golborne Road, London, W10



Total area (approx): 50.16 sq m (540 sq. ft)

Balcony total area (approx): 5.60 sq m (60 sq. ft)